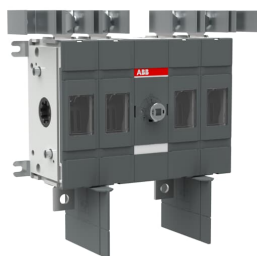


PRODUCT-DETAILS

# OTDC180US22

## OTDC180US22 PV Disconnect Switch



### General Information

Extended Product Type	OTDC180US22
Product ID	1SCA126942R1001
EAN	6417019568805
Catalog Description	OTDC180US22 PV Disconnect Switch
Long Description	OTDC180US22 PV Disconnect Switch, Terminal bolt kit included, Handle and shaft need to be ordered separately, Base mounting, US single-wire break, UL 1000 VDC 180 A, IEC 1000 VDC 250 A

### Ordering

Minimum Order Quantity	1 piece
Customs Tariff Number	85363090

### Popular Downloads

Data Sheet, Technical Information	1SCC301022C0201
Instructions and Manuals	1SCC301081M0206
Mechanical Drawings	OTDC100_200US22.igs 1SCC307107F0201 1SCC307108F0201

## Dimensions

Product Frame Size	S
Product Net Width	240 mm 9.4 in
Product Net Height	176 mm 6.9 in
Product Net Depth / Length	84 mm 3.3 in
Product Net Weight	2.4 kg 5.3 lb

## Technical

Connection Configuration	Double circuit 3
Rated Operational Current DC-21B ( $I_e$ )	(1000 V) 250 A
Conventional Free-air Thermal Current ( $I_{th}$ )	250 A
Conventional Thermal Current ( $I_{the}$ )	Fully Enclosed 250 A
Rated Impulse Withstand Voltage ( $U_{imp}$ )	12 kV
Rated Insulation Voltage ( $U_i$ )	1500 V
Rated Operational Voltage	1000 V
Rated Short-Circuit Making Capacity ( $I_{cm}$ )	(1000 V DC) 10 kA
Rated Short-time Withstand Current ( $I_{cw}$ )	(1000 V DC) 10 kA for 1 s 5 kA for 0.1 s 10 kA
Protection Type	Circuit breaker
Power Loss	at Rated Operating Conditions per Pole 6 W
Pollution Degree	3
Handle Type	Handle and shaft not included
Shaft Diameter	6 mm 0.24 in
Switches Operating Mechanism	Mechanism Between the Poles 22 (Between the Poles)
Position of Line Terminals	Bottom In - Bottom Out
Operating Mode	Front Operated
Standards	UL98B and IEC 60947-1, -3
Special Functions	US single-wire break
Mounting Type	Base mounting
Number of Circuits	2
Number of Poles	4
Degree of Protection	Front IP20
Terminal Type	Lug terminals
Terminal Width	19.5 mm

	0.77 in
Tightening Torque	Cable Lug 15...22 N·m

## Technical UL/CSA

Maximum Operating Voltage UL/CSA	1000 V DC
Ampere Rating UL/CSA	1000VDC 180 A
Tightening Torque UL/CSA	Cable Lug 10...12 N·m Cable Lug 133...195 lbf·in

## Environmental

RoHS Status	Following EU Directive 2011/65/EU
Environmental Information	NA

## Certificates and Declarations (Document Number)

CCC Certificate	CCC OTDC100-250.pdf
CSA Certificate	CSA Letter_of_Attestation OTDC100-200.pdf
Declaration of Conformity - CE	1SCC301201D2703
DNV GL Certificate	1SCC301231D0201
Environmental Information	NA
Instructions and Manuals	1SCC301081M0206
RoHS Information	1SCC301206D0205
UL Certificate	UL certificate OTDC100-200.pdf

## Container Information

Package Level 1 Units	box 1 piece
Package Level 1 Width	220 mm 8.7 in
Package Level 1 Depth / Length	260 mm 10.2 in
Package Level 1 Height	155 mm 6.1 in
Package Level 1 Gross Weight	2.8 kg 6.2 lb
Package Level 1 EAN	6417019568805

## Classifications

Object Classification Code	Q
ETIM 5	EC000216 - Switch disconnecter
ETIM 6	EC000216 - Switch disconnecter
ETIM 7	EC000216 - Switch disconnecter
UNSPSC	39122233
WEEE Category	5. Small Equipment (No External Dimension More Than 50 cm)

---

## Categories

---

Low Voltage Products and Systems → Switches → DC Switch-Disconnectors

