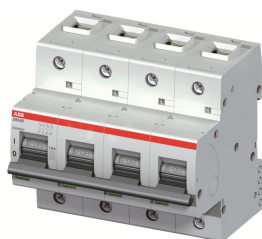


PRODUCT-DETAILS

S804B-C125

S804B-C125 High Performance MCB



General Information

| | |
|-----------------------|---------------------------------|
| Extended Product Type | S804B-C125 |
| Product ID | 2CCS814001R0844 |
| EAN | 7612271416492 |
| Catalog Description | S804B-C125 High Performance MCB |

Long Description

The S804B-C125 is a 4-pole High Performance Circuit breaker with C-characteristic, with cage terminal and a rated current of 125 A. It is a current limiting device with a maximum breaking capacity of 16kA at 230/400V. It can be used for voltages up to 230/400V. It has two different tripping mechanisms, the thermal tripping mechanism for overload protection and the electromechanic tripping mechanism for short circuit protection. The S804B-C125 complies with IEC/EN 60947-2 and EN 60898-1 and allows the use for residential, commercial and industrial applications. It has numerous of approvals, therefore it can be used worldwide. The extensive range of accessory makes the use of S804B-C125 more comfortable. Due to the fast arc extinction of S804B-C125 your application will be secured.

Technical

| | |
|---------------------------|----------------------------------|
| Standards | IEC/EN 60947-2 IEC/EN 60898-1 |
| Number of Poles | 4 |
| Number of Protected Poles | 4 |
| Tripping Characteristic | C |
| Rated Current (I_n) | 125 A |
| Rated Operational Voltage | 230/400 V AC |
| Power Loss | 43.6 W |

at Rated Operating Conditions per Pole 10.9 W

| | |
|---|---|
| Rated Insulation Voltage (U _i) | acc. to IEC/EN 60664-1 500 V AC |
| Rated Frequency (f) | 50...60 Hz |
| Rated Short-Circuit Capacity (I _{cn}) | (400 V) 10 kA (230 V) 10 kA |
| Rated Ultimate Short-Circuit Breaking Capacity (I _{cu}) | (230 / 400 V AC) 16 kA (300 V DC) 10 kA |
| Rated Service Short-Circuit Breaking Capacity (I _{cs}) | (230 / 400 V AC) 10 kA |
| Energy Limiting Class | 3 |
| Overvoltage Category | III |
| Pollution Degree | 3 |
| Rated Impulse Withstand Voltage (U _{imp}) | 6 kV |
| Housing Material | Insulation group I, RAL 7035 |
| Actuator Marking | I / O |
| Contact Position Indication | ON / OFF / TRIP |
| Degree of Protection | IP20 |
| Remarks | Connection from top and bottom Connecting with CU only IP40 in enclosure with cover Cage terminal with captille screw |
| Terminal Type | Screw Terminals |
| Connecting Capacity | Rigid 0 ... 50 mm ² Flexible 0 ... 70 mm ² |
| Tightening Torque | 3.5 N·m |
| Recommended Screw Driver | Pozidriv 2 |
| Mounting on DIN Rail | TH35-15 (35 x 15 mm Mounting Rail) acc. to IEC 60715 TH35-7.5 (35 x 7.5 mm Mounting Rail) acc. to IEC 60715 |
| Mounting Position | Any |
| Built-In Depth (t ₂) | 82.5 mm |

Environmental

| | |
|-----------------------------------|-----------------------------------|
| Ambient Air Temperature | Operation -25...60 °C |
| Reference Ambient Air Temperature | acc. to IEC60947-2 30 °C |
| RoHS Status | Following EU Directive 2011/65/EU |

Dimensions

| | |
|----------------------------|---------|
| Product Net Width | 106 mm |
| Product Net Depth / Length | 82.5 mm |
| Product Net Height | 95 mm |
| Product Net Weight | 980 g |

Container Information

| | |
|--------------------------------|-------------|
| Package Level 1 Units | box 1 piece |
| Package Level 1 Width | 105 mm |
| Package Level 1 Depth / Length | 111 mm |
| Package Level 1 Height | 99 mm |
| Package Level 1 Gross | 1010 g |

Weight

| | |
|---------------------|---------------|
| Package Level 1 EAN | 7612271416492 |
|---------------------|---------------|

Ordering

| | |
|------------------------|----------|
| Minimum Order Quantity | 1 piece |
| Customs Tariff Number | 85362020 |

Certificates and Declarations (Document Number)

| | |
|--------------------------------|------------------------------------|
| Declaration of Conformity - CE | 2CCC413016D0601 |
| Environmental Information | 2CCY413207D0203 |
| Instructions and Manuals | 2CCC413016M0008 |
| RoHS Information | 2CCC413016D0601 9AKK107680A3903 |

Popular Downloads

| | |
|-----------------------------------|-----------------|
| Data Sheet, Technical Information | 2CCC413003C0208 |
| Instructions and Manuals | 2CCC413016M0008 |

Classifications

| | |
|----------------------------|--|
| Object Classification Code | F |
| ETIM 6 | EC000042 - Miniature circuit breaker (MCB) |
| ETIM 7 | EC000042 - Miniature circuit breaker (MCB) |

Categories

Low Voltage Products and Systems → Modular DIN Rail Products → High Performance Circuit Breakers HPCBs

