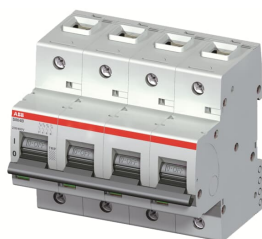


PRODUCT-DETAILS

S804B-B125

S804B-B125 High Performance MCB



General Information

Extended Product Type	S804B-B125
Product ID	2CCS814001R0845
EAN	7612271416768
Catalog Description	S804B-B125 High Performance MCB

Long Description

The S804B-B125 is a 4-pole High Performance Circuit breaker with B-characteristic, with cage terminal and a rated current of 125 A. It is a current limiting device with a maximum breaking capacity of 16kA at 230/400V. It can be used for voltages up to 230/400V. It has two different tripping mechanisms, the thermal tripping mechanism for overload protection and the electromechanic tripping mechanism for short circuit protection. The S804B-B125 complies with IEC/EN 60947-2 and EN 60898-1 and allows the use for residential, commercial and industrial applications. It has numerous of approvals, therefore it can be used worldwide. The extensive range of accessory makes the use of S804B-B125 more comfortable. Due to the fast arc extinction of S804B-B125 your application will be secured.

Technical

Standards	IEC/EN 60947-2 IEC/EN 60898-1
Number of Poles	4
Number of Protected Poles	4
Tripping Characteristic	B
Rated Current (I _n)	125 A
Rated Operational Voltage	230/400 V AC
Power Loss	43.6 W

at Rated Operating Conditions per Pole 10.9 W

Rated Insulation Voltage (U _i)	acc. to IEC/EN 60664-1 500 V AC
Rated Frequency (f)	50...60 Hz
Rated Short-Circuit Capacity (I _{cn})	(400 V) 10 kA (230 V) 10 kA
Rated Ultimate Short-Circuit Breaking Capacity (I _{cu})	(230 / 400 V AC) 16 kA (300 V DC) 10 kA
Rated Service Short-Circuit Breaking Capacity (I _{cs})	(230 / 400 V AC) 10 kA
Energy Limiting Class	3
Overvoltage Category	III
Pollution Degree	3
Rated Impulse Withstand Voltage (U _{imp})	6 kV
Housing Material	Insulation group I, RAL 7035
Actuator Marking	I / O
Contact Position Indication	ON / OFF / TRIP
Degree of Protection	IP20
Remarks	Connection from top and bottom Connecting with CU only IP40 in enclosure with cover Cage terminal with captille screw
Terminal Type	Screw Terminals
Connecting Capacity	Rigid 0 ... 50 mm ² Flexible 0 ... 70 mm ²
Tightening Torque	3.5 N·m
Recommended Screw Driver	Pozidriv 2
Mounting on DIN Rail	TH35-15 (35 x 15 mm Mounting Rail) acc. to IEC 60715 TH35-7.5 (35 x 7.5 mm Mounting Rail) acc. to IEC 60715
Mounting Position	Any
Built-In Depth (t ₂)	82.5 mm

Environmental

Ambient Air Temperature	Operation -25...60 °C
Reference Ambient Air Temperature	acc. to IEC60947-2 30 °C
RoHS Status	Following EU Directive 2011/65/EU

Dimensions

Product Net Width	106 mm
Product Net Depth / Length	82.5 mm
Product Net Height	95 mm
Product Net Weight	980 g

Container Information

Package Level 1 Units	box 1 piece
Package Level 1 Width	105 mm
Package Level 1 Depth / Length	111 mm
Package Level 1 Height	99 mm
Package Level 1 Gross	1010 g

Weight

Package Level 1 EAN	7612271416768
---------------------	---------------

Ordering

Minimum Order Quantity	1 piece
Customs Tariff Number	85362020

Certificates and Declarations (Document Number)

Declaration of Conformity - CE	2CCC413016D0601
Environmental Information	2CCY413207D0203
Instructions and Manuals	2CCC413016M0008
RoHS Information	2CCC413016D0601 9AKK107680A3903

Popular Downloads

Data Sheet, Technical Information	2CCC413003C0208
Instructions and Manuals	2CCC413016M0008

Classifications

Object Classification Code	F
ETIM 6	EC000042 - Miniature circuit breaker (MCB)
ETIM 7	EC000042 - Miniature circuit breaker (MCB)

Categories

Low Voltage Products and Systems → Modular DIN Rail Products → High Performance Circuit Breakers HPCBs

