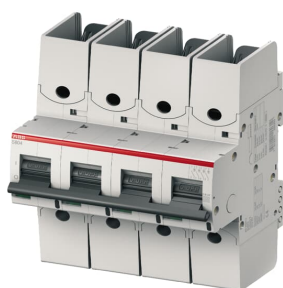


PRODUCT-DETAILS

S804S-D125

S804S-D125 High Performance MCB



General Information

Extended Product Type	S804S-D125
Product ID	2CCS864001R0841
EAN	7612271201432
Catalog Description	S804S-D125 High Performance MCB

Long Description

The S804S-D125 is a 4-pole High Performance Circuit breaker with D-Characteristic, with cage terminal and a rated current of 125 A. It is a current limiting device with a maximum breaking capacity of 50kA at 240/415V. It can be used for voltages up to 400/690V and in DC as well. It has two different tripping mechanisms, the thermal tripping mechanism for overload protection and the electromechanic tripping mechanism for short circuit protection. The S804S-D125 complies with IEC/EN 60947-2 and allows the use for industrial applications. It has numerous of approvals, therefore it can be used worldwide. The extensive range of accessory makes the use of S804S-D125 more comfortable. Due to the fast arc extinction of S804S-D125 your application will be secured.

Technical

Standards	IEC/EN 60947-2
Number of Poles	4
Number of Protected Poles	4
Tripping Characteristic	D
Rated Current (I_n)	125 A
Rated Operational Voltage	400/690 V AC 375 V DC
Power Loss	7.2 W at Rated Operating Conditions per Pole 1.8 W

Rated Insulation Voltage (U _i)	690 V AC
Rated Frequency (f)	50...60 Hz
Rated Short-Circuit Capacity (I _{cn})	(400 V) 25 kA (230 V) 25 kA
Rated Ultimate Short-Circuit Breaking Capacity (I _{cu})	(240 / 415 V AC) 50 kA (254 / 440 V AC) 30 kA (400 / 690 V AC) 6 kA (125 V DC) 30 kA
Rated Service Short-Circuit Breaking Capacity (I _{cs})	(240 / 415 V AC) 40 kA (254 / 440 V AC) 22.5 kA (400 / 690 V AC) 4 kA (125 V DC) 30 kA
Energy Limiting Class	3
Overvoltage Category	IV
Pollution Degree	3
Rated Impulse Withstand Voltage (U _{imp})	8 kV
Housing Material	Insulation group I, RAL 7035
Actuator Marking	I / O
Contact Position Indication	ON / OFF / TRIP
Degree of Protection	IP20
Remarks	Connection from top and bottom Connecting with CU only IP40 in enclosure with cover Cage terminal with captive screw
Electrical Endurance	4000 cycle 4000 cycle
Terminal Type	Screw Terminals
Connecting Capacity	Rigid 0 ... 50 mm ² Flexible 0 ... 70 mm ²
Tightening Torque	3.5 N·m 31 in·lb
Recommended Screw Driver	Pozidriv 2
Mounting on DIN Rail	TH35-15 (35 x 15 mm Mounting Rail) acc. to IEC 60715 TH35-7.5 (35 x 7.5 mm Mounting Rail) acc. to IEC 60715
Mounting Position	Any
Built-In Depth (t ₂)	82.5 mm

Environmental

Ambient Air Temperature	Operation -25...60 °C
Reference Ambient Air Temperature	acc. to IEC60947-2 30 °C acc. to EN60898-1 30 °C
Resistance to Vibrations acc. to IEC 60068-2-6	2 - 13.2 Hz / 1mm 13.2 - 100Hz / 0.7g with load 100% x 1e
Environmental Conditions	Damp Heat Cyclic acc. to IEC 60068-2-30 12+12 cycle Damp Heat Cyclic acc. to IEC 60068-2-30 55°C @ 90-96% Damp Heat Cyclic acc. to IEC 60068-2-30 25°C @ 90-100% Dry Heat Test B acc. to IEC 60068-2-2 16 hour @ 55 °C Dry Heat Test B acc. to IEC 60068-2-2 2 hour @ 70 °C
RoHS Status	Following EU Directive 2011/65/EU

Dimensions

Product Net Width	108 mm
Product Net Depth / Length	82.5 mm
Product Net Height	142 mm
Product Net Weight	980 g

Container Information

Package Level 1 Units	box 1 piece
Package Level 1 Width	152 mm
Package Level 1 Depth / Length	111 mm
Package Level 1 Height	99 mm
Package Level 1 Gross Weight	1030 g
Package Level 1 EAN	7612271201432

Ordering

Minimum Order Quantity	1 piece
Customs Tariff Number	85362020
E-Number (Switzerland)	807728335

Certificates and Declarations (Document Number)

Declaration of Conformity - CE	2CCC413016D0601
Environmental Information	2CCY413207D0203
Instructions and Manuals	2CCC413016M0008
RoHS Information	2CCC413016D0601 9AKK107680A3903

Popular Downloads

Data Sheet, Technical Information	2CCC413003C0208
Instructions and Manuals	2CCC413016M0008
Dimension Diagram	2CCC413003C0201

Classifications

Object Classification Code	F
ETIM 6	EC000042 - Miniature circuit breaker (MCB)
ETIM 7	EC000042 - Miniature circuit breaker (MCB)

Categories

Low Voltage Products and Systems → Modular DIN Rail Products → High Performance Circuit Breakers HPCBs

