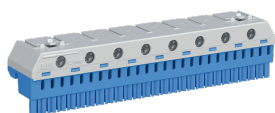


PRODUCT-DETAILS

ZK268B

ZK268B N-terminal blocks 23x4+7x25qmm



General Information

Extended Product Type	ZK268B
Product ID	2CPX063164R9999
EAN	4011617631644
Catalog Description	ZK268B N-terminal blocks 23x4+7x25qmm
Long Description	N quick plug-in terminal for plug-in carrier, assembly without tools using simple plug-in and latching equipment, clear color-coding: N = blue, flexible terminal system for multiple N-circuits, number of terminals: 26 x 1.5 - 4 mm ² (spring clamp technology) + 8 x 2.5 to 25 mm ² (screw connection technology), external dimensions H x W x D in mm: 32 x 147 x 31 mm, simple labelling of the terminal points (DIN VDE 0603 Part 1) with pre-printed, self-adhesive number strips.

Ordering

E-Number (Sweden)	2201279
EAN	4011617631644
Minimum Order Quantity	1 piece
Customs Tariff Number	85369010

Dimensions

Product Net Width	148 mm
Product Net Height	32 mm
Product Net Depth / Length	31 mm
Product Net Weight	0.138 kg

Container Information

Package Level 1 Units	pack 1 piece
Package Level 1 Width	200.000 mm
Package Level 1 Height	35.000 mm
Package Level 1 Depth / Length	200.000 mm
Package Level 1 Gross Weight	0.144 kg
Package Level 1 EAN	4011617631644

Additional Information

Accessory Type	terminals
Cable Diameter	25 ... 25 mm
Color	Blue
Number of Line Terminals	34
Product Main Type	ZK
Product Name	ZK268B N-terminal blocks 23x4+7x25qmm
Rated Current (I _n)	63 A
Rated Voltage (U _r)	230 V
Terminal Connection Type	N-Terminal
Terminal Type	Quick-Terminal

Certificates and Declarations (Document Number)

Data Sheet, Technical Information	2CPC000001C0101 2CPC000002C0101 2CPC000031C0101 2CPC000187C0101 2CPC000188C0101
Declaration of Conformity - CE	No declaration needed
Instructions and Manuals	2CPC130114M5601

Classifications

ETIM 5	EC000275 - Rail terminal bar
ETIM 6	EC000446 - Screw less terminal
ETIM 7	EC000446 - Screw less terminal
Object Classification Code	U
WEEE Category	5. Small Equipment (No External Dimension More Than 50 cm)

Categories

Low Voltage Products and Systems → Enclosures → Consumer Units → Consumer Units

