

**RONDELLE PLATE  
WASHER**

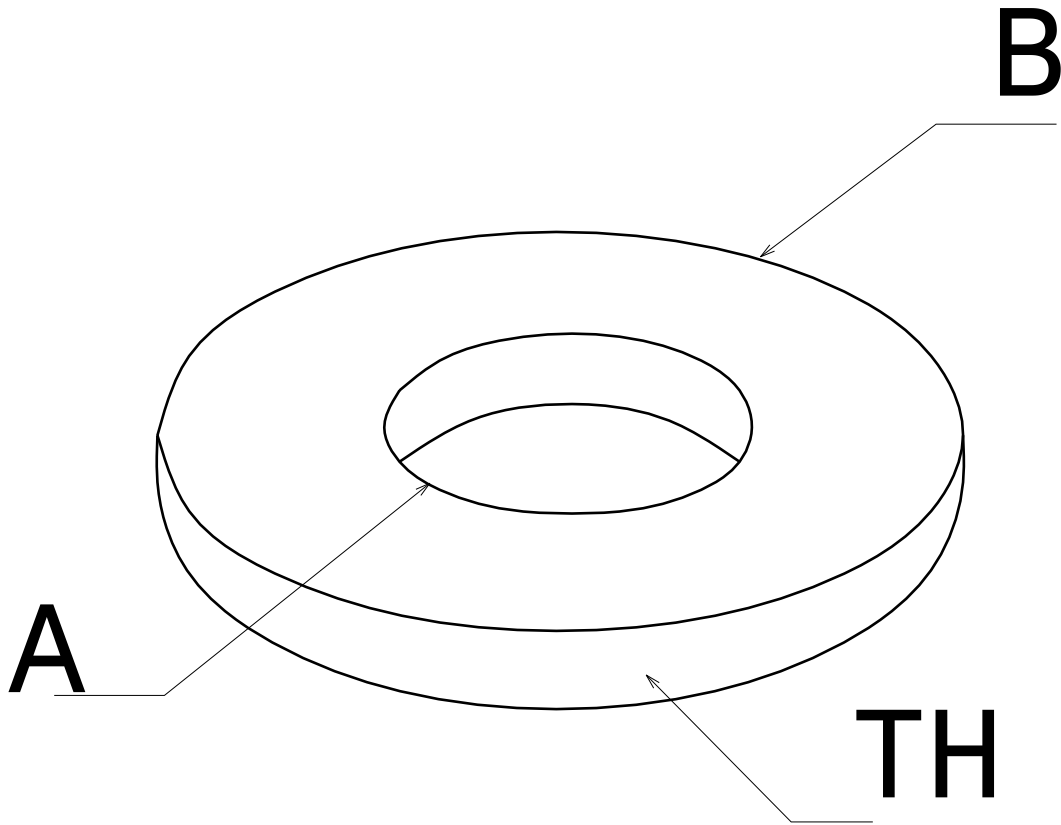
**DC**



**CABLE  
MANAGEMENT**

**FT0136-2**

**06 17**



REF	CODE	POIDS (Kg/100u)	WEIGHT (lb/100u)	A mm	A inch	B mm	B inch	TH mm	TH inch
RM8	801 513	0.300	0.660	8.4	0.33	18	0.709	1.5	0.059

**NORMES / STANDARD**

<b>CLASSE / CLASS</b> 100 HV	NFE 25 513 M
<b>PROTECTION / COATING</b> Zinc Lamellaire / Zinc Rich Coating	Class 6 according to CEI 61537

Propriété exclusive de LEGRAND, ne peut être ni copié, ni transmis à des tiers sans autorisation écrite.  
Exclusive property of LEGRAND shouldn't be reproduced or transmitted to any people without written authorization