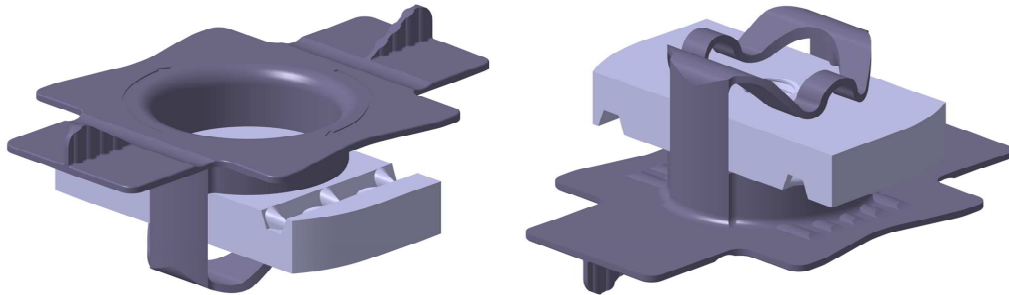


AUTOSTRUT 41 NUT GEOMET

Reference(s) : 801 943 – 953 – 963 - 973



1 RANGE

	NORMES / STANDARD
MATIERE / MATERIAL S 235 JR	EN 10025-2
PROTECTION / COATING GEOMET	class 6 according CEI 61537

Colisage Packing	REF	CODE	POIDS (Kg)	WEIGHT (lb)	A (mm)	A (inch)	M
50	E41AAM6GC	801 943	1.400	3.086	6.0	0.236	M6
	E41AAM8GC	801 953	1.350	2.976	6.0	0.236	M8
	E41AAM10GC	801 963	1.950	4.299	8.0	0.315	M10
	E41AAM12GC	801 973	1.950	4.299	9.5	0.374	M12

Dimensions in (mm/Inch) :

