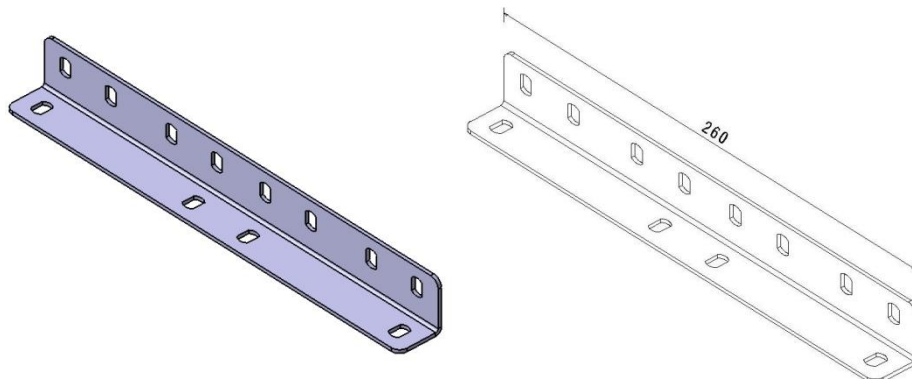


P31 Coupler H50 PG & HDG

Reference(s) : 347 476 – 347 478



Ref.	Description	Raw Material (R.M.)	R.M. Standard	Coating Standard	Thickness (mm)	Weight (kg)
347 476	Square coupler H50 20/10 PG	DX51D Z275 (RE MIN 220MPA)	EN10346	//	2,0	0.21
347 478	Square coupler H50 20/10 HDG	S235JR	EN10025	ISO1461	2,0	0.23