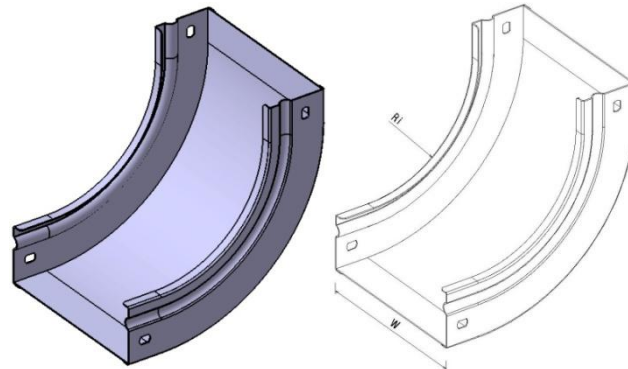


**P31 Inside Riser 90° H50 HDG**
**Reference (s) : 347 667 to 675**


Ref.	Description	Raw Material (R.M.)	R.M. Standard	Coating Standard	W (mm)	Ri (mm)	Thickness (mm)	Weight (kg)
347 667	Inside riser 90° P31HDG H50 W50	DX51D Z275 (RE MIN 220 MPA)	EN10346	ISO1461	50	20	1	0.2
347 668	Inside riser 90° P31HDG H50 W75	DX51D Z275 (RE MIN 220 MPA)	EN10346	ISO1461	75	100	1	0.4
347 669	Inside riser 90° P31HDG H50 W100	DX51D Z275 (RE MIN 220 MPA)	EN10346	ISO1461	100	100	1	0.5
347 670	Inside riser 90° P31HDG H50 W150	DX51D Z275 (RE MIN 220 MPA)	EN10346	ISO1461	150	100	1	0.6
347 671	Inside riser 90° P31HDG H50 W200	DX51D Z275 (RE MIN 220 MPA)	EN10346	ISO1461	200	100	1	0.7
347 672	Inside riser 90° P31HDG H50 W300	DX51D Z275 (RE MIN 220 MPA)	EN10346	ISO1461	300	100	1	0.95
347 673	Inside riser 90° P31HDG H50 W400	DX51D Z275 (RE MIN 220 MPA)	EN10346	ISO1461	400	150	1	1.7
347 674	Inside riser 90° P31HDG H50 W500	DX51D Z275 (RE MIN 220 MPA)	EN10346	ISO1461	500	150	1	2.0
347 675	Inside riser 90° P31HDG H50 W600	DX51D Z275 (RE MIN 220 MPA)	EN10346	ISO1461	600	150	1	2.3