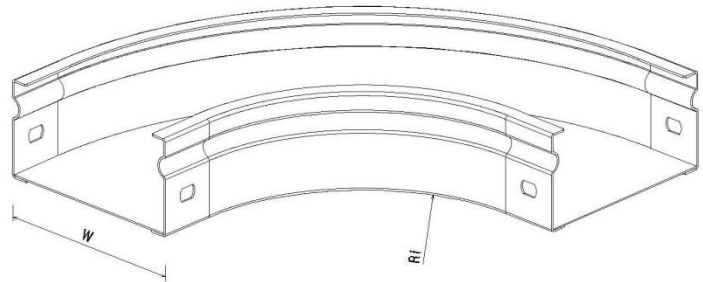
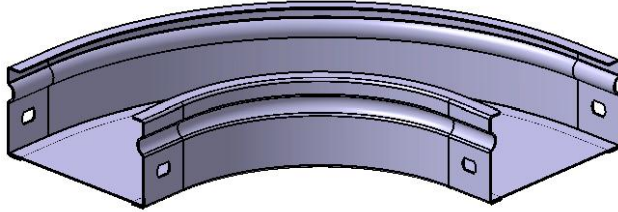


**P31 Flat Bend 90° H50 W50→300 mm
PG**

Reference(s) : 347 502 to 507



Ref.	Description	Raw Material (R.M.)	R.M. Standard	W (mm)	Ri (mm)	Thickness (mm)	Weight (kg)
347 502	Flat Bend 90° P31 H50 W50	DX51D Z275 (RE MIN 220MPA)	EN10346	50	20	1	0.2
347 503	Flat Bend 90° P31 H50 W75	DX51D Z275 (RE MIN 220MPA)	EN10346	75	100	1	0.4
347 504	Flat Bend 90° P31 H50 W100	DX51D Z275 (RE MIN 220MPA)	EN10346	100	100	1	0.5
347 505	Flat Bend 90° P31 H50 W150	DX51D Z275 (RE MIN 220MPA)	EN10346	150	100	1	0.8
347 506	Flat Bend 90° P31 H50 W200	DX51D Z275 (RE MIN 220MPA)	EN10346	200	100	1	0.9
347 507	Flat Bend 90° P31 H50 W300	DX51D Z275 (RE MIN 220MPA)	EN10346	300	100	1	1.8