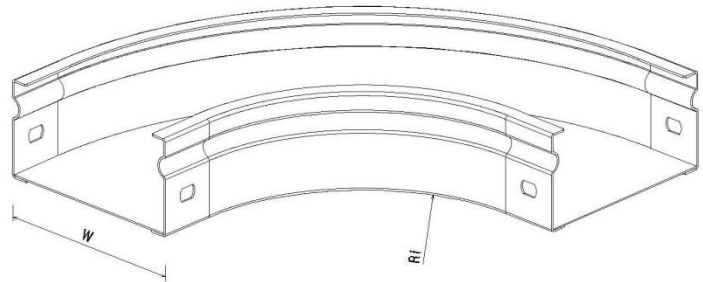
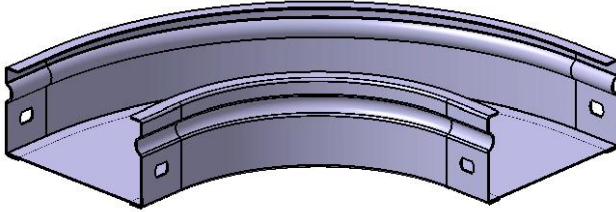


**P31 Flat Bend 90° H50 W50→300 mm  
HDG**

Reference(s) : 347 685 to 690



Ref.	Description	Raw Material (R.M.)	R.M. Standard	Coating Standard	W (mm)	Ri (mm)	Thickness (mm)	Weight (kg)
347 685	Flat Bend 90° P31 HDG H50 W50	DX51D Z275 (RE MIN 220MPA)	EN10346	ISO1461	50	20	1	0.2
347 686	Flat Bend 90° P31 HDG H50 W75	DX51D Z275 (RE MIN 220MPA)	EN10346	ISO1461	75	100	1	0.4
347 687	Flat Bend 90° P31 HDG H50 W100	DX51D Z275 (RE MIN 220MPA)	EN10346	ISO1461	100	100	1	0.5
347 688	Flat Bend 90° P31 HDG H50 W150	DX51D Z275 (RE MIN 220MPA)	EN10346	ISO1461	150	100	1	0.8
347 689	Flat Bend 90° P31 HDG H50 W200	DX51D Z275 (RE MIN 220MPA)	EN10346	ISO1461	200	100	1	0.9
347 690	Flat Bend 90° P31 HDG H50 W300	DX51D Z275 (RE MIN 220MPA)	EN10346	ISO1461	300	100	1	1.8