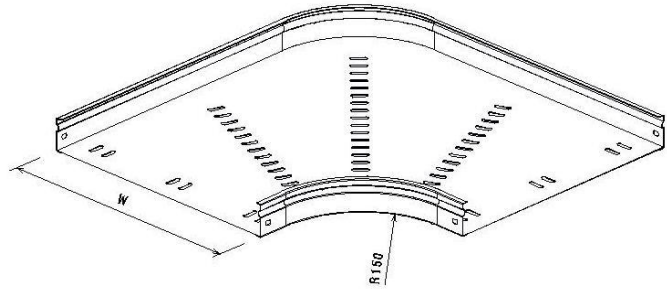
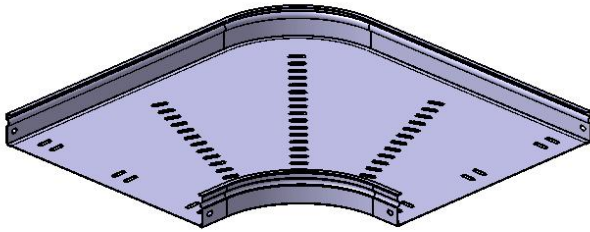


**P31 Flat Bend 90° H50 W400→600 mm
PG**

Reference(s) : 347 508 to 510



| Ref. | Description | Raw Material (R.M.) | R.M. Standard | W (mm) | Thickness (mm) | Weight (kg) |
|---------|-------------------------------|-------------------------------|---------------|--------|----------------|-------------|
| 347 508 | Flat Bend 90° P31 H50 W400 | DX51D Z275 (RE MIN 220MPA) | EN10346 | 400 | 1 | 3.1 |
| 347 509 | Flat Bend 90° P31 H50 W500 | DX51D Z275 (RE MIN 220MPA) | EN10346 | 500 | 1 | 4.3 |
| 347 510 | Flat Bend 90° P31 H50 W600 | DX51D Z275 (RE MIN 220MPA) | EN10346 | 600 | 1 | 5.6 |