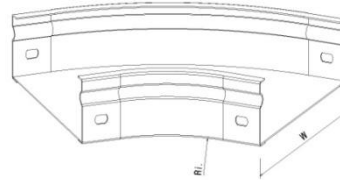
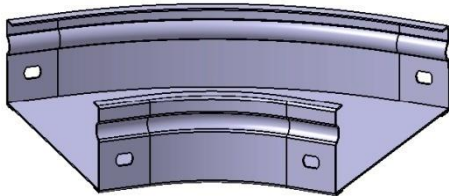


**P31 Flat Bend 45° H50 W75→300 mm
PG**

Reference(s) : 347 512 to 516



Ref.	Description	Raw Material (R.M.)	R.M. Standard	W (mm)	Ri (mm)	Thickness (mm)	Weight (kg)
347 512	Flat Bend 45° P31 H50 W75	DX51D Z275 (RE MIN 220 MPA)	EN10346	75	100	1	0.3
347 513	Flat Bend 45° P31 H50 W100	DX51D Z275 (RE MIN 220 MPA)	EN10346	100	100	1	0.35
347 514	Flat Bend 45° P31 H50 W150	DX51D Z275 (RE MIN 220 MPA)	EN10346	150	100	1	0.4
347 515	Flat Bend 45° P31 H50 W200	DX51D Z275 (RE MIN 220 MPA)	EN10346	200	100	1	0.5
347 516	Flat Bend 45° P31 H50 W300	DX51D Z275 (RE MIN 220 MPA)	EN10346	300	100	1	0.8