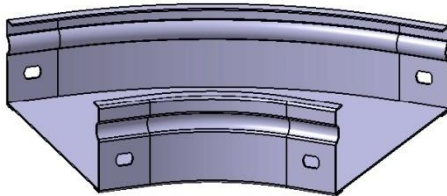


**P31 Flat Bend 45° H50 W75→300 mm
HDG**

Reference(s) : 347 695 to 699



Ref.	Description	Raw Material (R.M.)	R.M. Standard	Coating Standard	W (mm)	Ri (mm)	Thickness (mm)	Weight (kg)
347 695	Flat Bend 45° P31 HDG H50 W75	DX51D (RE MIN 220 MPA) Z275	EN10346	ISO1461	75	100	1	0.3
347 696	Flat Bend 45° P31 HDG H50 W100	DX51D (RE MIN 220 MPA) Z275	EN10346	ISO1461	100	100	1	0.35
347 697	Flat Bend 45° P31 HDG H50 W150	DX51D (RE MIN 220 MPA) Z275	EN10346	ISO1461	150	100	1	0.4
347 698	Flat Bend 45° P31 HDG H50 W200	DX51D (RE MIN 220 MPA) Z275	EN10346	ISO1461	200	100	1	0.5
347 699	Flat Bend 45° P31 HDG H50 W300	DX51D (RE MIN 220 MPA) Z275	EN10346	ISO1461	300	100	1	0.8