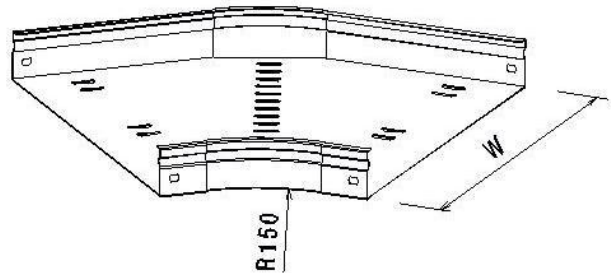
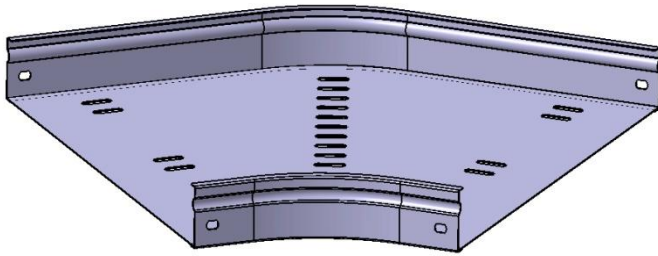


**P31 Flat Bend 45° H50 W400→600 mm
PG**

Reference(s) : 347 517 to 519



Ref.	Description	Raw Material (R.M.)	R.M. Standard	W (mm)	Thickness (mm)	Weight (kg)
347 517	Flat Bend 45° P31 H50 W400	DX51D Z275 (RE MIN 220 MPA)	EN10346	400	1	1.6
347 518	Flat Bend 45° P31 H50 W500	DX51D Z275 (RE MIN 220 MPA)	EN10346	500	1	2.1
347 519	Flat Bend 45° P31 H50 W600	DX51D Z275 (RE MIN 220 MPA)	EN10346	600	1	2.6