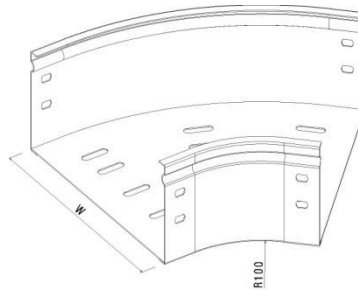
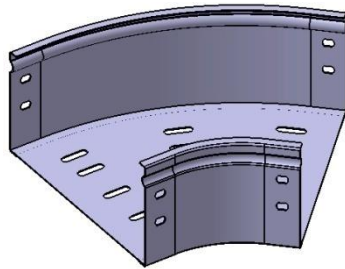


**P31 Flat Bend 45° H100 W100→300 mm  
PG**

Reference(s) : 347 568 to 571



Ref.	Description	Raw Material (R.M.)	R.M. Standard	W (mm)	Thickness (mm)	Weight (kg)
347 568	Flat Bend 45° P31 H100 W100	S220GD Z275	EN10346	100	1	0.4
347 569	Flat Bend 45° P31 H100 W150	S220GD Z275	EN10346	150	1	0.6
347 570	Flat Bend 45° P31 H100 W200	S220GD Z275	EN10346	200	1	0.7
347 571	Flat Bend 45° P31 H100 W300	S220GD Z275	EN10346	300	1	1.0