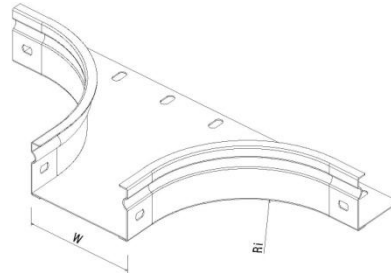
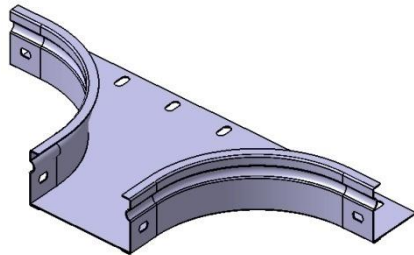


P31 Branch H50 PG

Reference(s) : 347 538 to 546



Ref.	Description	Raw Material (R.M.)	R.M. Standard	W (mm)	Ri (mm)	Thickness (mm)	Weight (kg)
347 538	Branch P31 H50 W50	DX51D Z275 (RE MIN 220 MPA)	EN10346	50	20	1	0.3
347 539	Branch P31 H50 W75	DX51D Z275 (RE MIN 220 MPA)	EN10346	75	100	1	0.7
347 540	Branch P31 H50 W100	DX51D Z275 (RE MIN 220 MPA)	EN10346	100	100	1	0.8
347 541	Branch P31 H50 W150	DX51D Z275 (RE MIN 220 MPA)	EN10346	150	100	1	0.9
347 542	Branch P31 H50 W200	DX51D Z275 (RE MIN 220 MPA)	EN10346	200	100	1	1
347 543	Branch P31 H50 W300	DX51D Z275 (RE MIN 220 MPA)	EN10346	300	100	1	1.3
347 544	Branch P31 H50 W400	DX51D Z275 (RE MIN 220 MPA)	EN10346	400	150	1	2.3
347 545	Branch P31 H50 W500	DX51D Z275 (RE MIN 220 MPA)	EN10346	500	150	1	2.6
347 546	Branch P31 H50 W600	DX51D Z275 (RE MIN 220 MPA)	EN10346	600	150	1	3