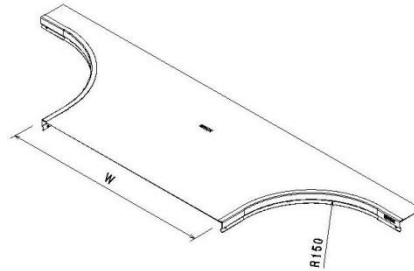
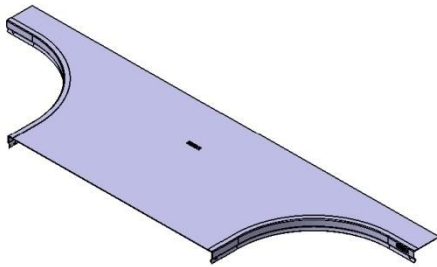


**P31HD - Cover Branch
W400→600 mm PG**

Reference(s) : 347 664 to 666



Ref.	Description	Raw Material (R.M.)	R.M. Standard	Coating Standard	W (mm)	Thickness (mm)	Weight (kg)
347 664	Cover Branch W400	DX51D Z275 (RE MIN 220 MPA)	EN10346	//	400	1	1
347 665	Cover Branch W500	DX51D Z275 (RE MIN 220 MPA)	EN10346	//	500	1	1.2
347 666	Cover Branch W600	DX51D Z275 (RE MIN 220 MPA)	EN10346	//	600	1	1.4