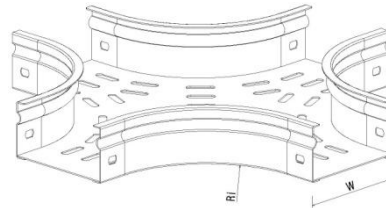
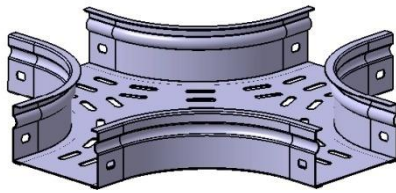


**P31 Crosspieces H50 PG**

Reference(s) : 347 529 to 537



Ref.	Description	Raw Material (R.M.)	R.M. Standard	W (mm)	Ri (mm)	Thickness (mm)	Weight (kg)
347 529	Crosspieces P31 H50 W50	DX51D Z275 (RE MIN 220 MPA)	EN10346	50	20	1	0.3
347 530	Crosspieces P31 H50 W75	DX51D Z275 (RE MIN 220 MPA)	EN10346	75	100	1	0.9
347 531	Crosspieces P31 H50 W100	DX51D Z275 (RE MIN 220 MPA)	EN10346	100	100	1	1.1
347 532	Crosspieces P31 H50 W150	DX51D Z275 (RE MIN 220 MPA)	EN10346	150	100	1	1.5
347 533	Crosspieces P31 H50 W200	DX51D Z275 (RE MIN 220 MPA)	EN10346	200	100	1	1.9
347 534	Crosspieces P31 H50 W300	DX51D Z275 (RE MIN 220 MPA)	EN10346	300	100	1	2.8
347 535	Crosspieces P31 H50 W400	DX51D Z275 (RE MIN 220 MPA)	EN10346	400	150	1	4.6
347 536	Crosspieces P31 H50 W500	DX51D Z275 (RE MIN 220 MPA)	EN10346	500	150	1	6.0
347 537	Crosspieces P31 H50 W600	DX51D Z275 (RE MIN 220 MPA)	EN10346	600	150	1	7.5