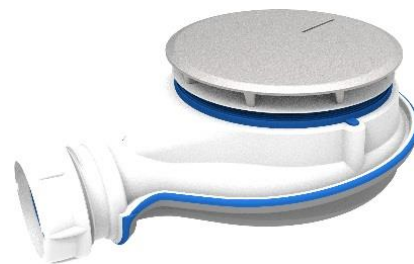




# 0205800 / TBXS – 0205801 / TBXSM – 0205810 / TBXSSC WASTE FOR SHOWER TRAY Ø90

**FUNCTION :**

- Super flat trapped waste for shower trays with ø90 mm hole
- Adapted to ultra-flat shower trays
- Outlet to bond or screw Ø40



CODE NUMBER	COVER
0205800 / TBXS	CHROME PLATED ABS
0205801 / TBXSM	CHROME PLATED METAL
0205810 / TBXSSC	WITHOUT COVER

**DESCRIPTION :**

- Body : co-injected with built-in seals.
- Removable Magnetech flap, with 10 mm height water seal.

**ACCESSORIES :**

- Thickness template to choose short or long threaded plate (0205800 / TBXS and 0205801 / TBXSM)
- Multifunctions spanner :
  - Clamping tool with torque limiter.
  - Cover support for 0205800 / TBXS and 0205801 / TBXSM
  - Hair catcher.

**TECHNICAL FEATURES :**

- Materials :
  - Co-injection : body in polypropylene, bonding part in ABS, and elastomere seals.
  - Flap : polypropylene and elastomere.
- Dimensions :
  - Compactness : 66 mm.
  - Connection to the waste pipe : compression G1”1/2 – or to be glued : ø40 mm.
  - Tightening thickness : 6 to 25 mm (15 to 25 mm for 0205810 / TBXSSC)
- Flow rate : 33 l/min under a 15 mm water load

**NF CERTIFIED :**

- NF 077



**INSTALLATION :**

- Choosing between short or long threaded plate depending on the shower tray thickness ;
- Connection of the outlet to the waste pipe : compression G1”1/2 or to be glued : ø40 mm ;
- Assembly of the shower drain on the tray (threaded plate) ;
- Installation of the Magnetech flap inside the shower drain ;
- Put the multifunctions spanner and the cover on the top of the shower drain.



**0205800 / TBXS – 0205801 / TBXSM – 0205810 / TBXSSC**  
**WASTE FOR SHOWER TRAY Ø90**

**MAINTENANCE :**

- The use of aggressive cleansers is prohibited on the chrome plated parts.
- Do not use white vinegar.
- Removable hair catcher.
- Removable Magnetech flap for easy access and cleaning.

