



#### SPECIFICATIONS

Wellbox 2 ways, required flush-fit part

Ø 1/2" water inlet and outlet

Stop taps

Non-return valves

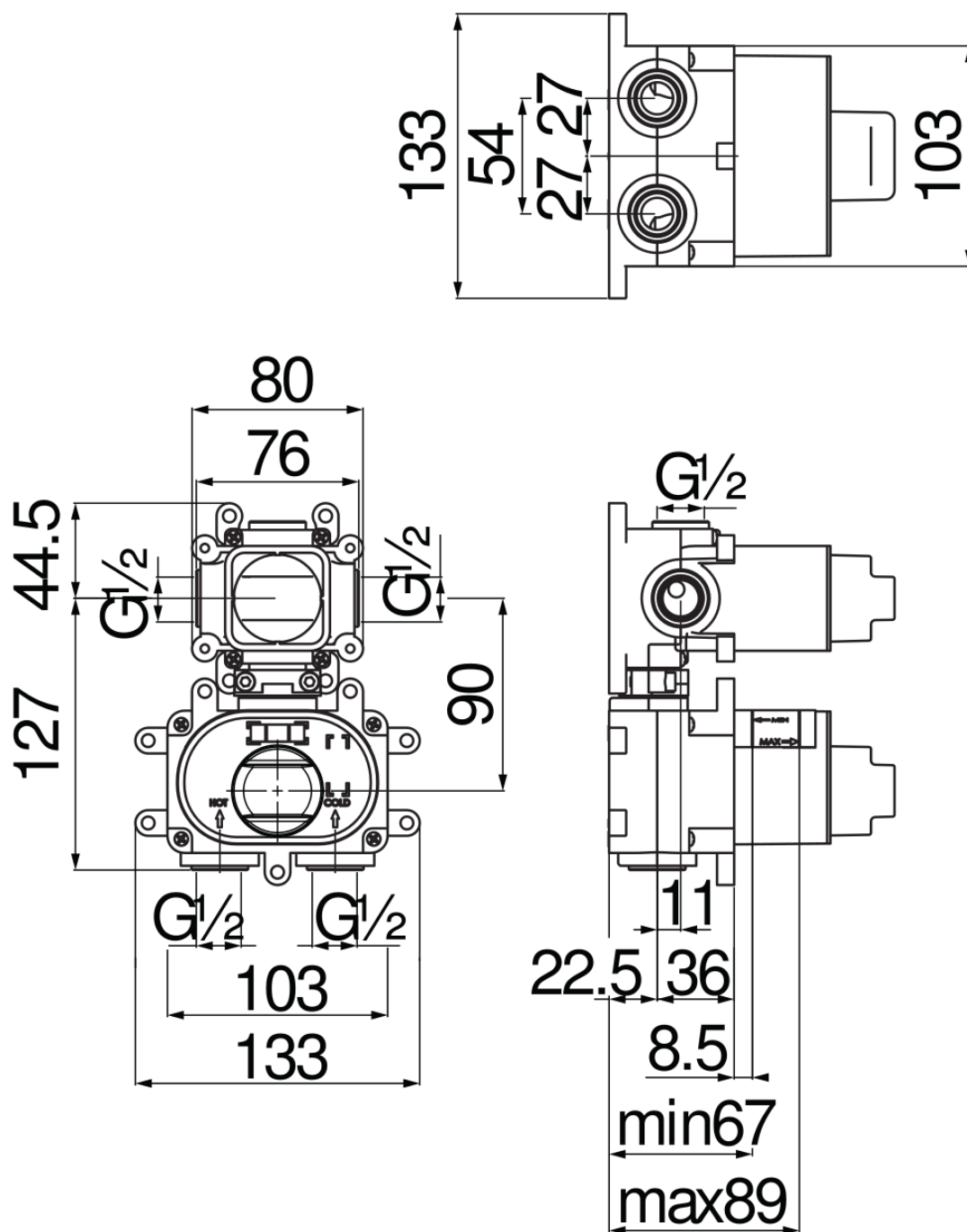
Also suitable for assembly on plasterboard

Cartridge spare filters included in the package

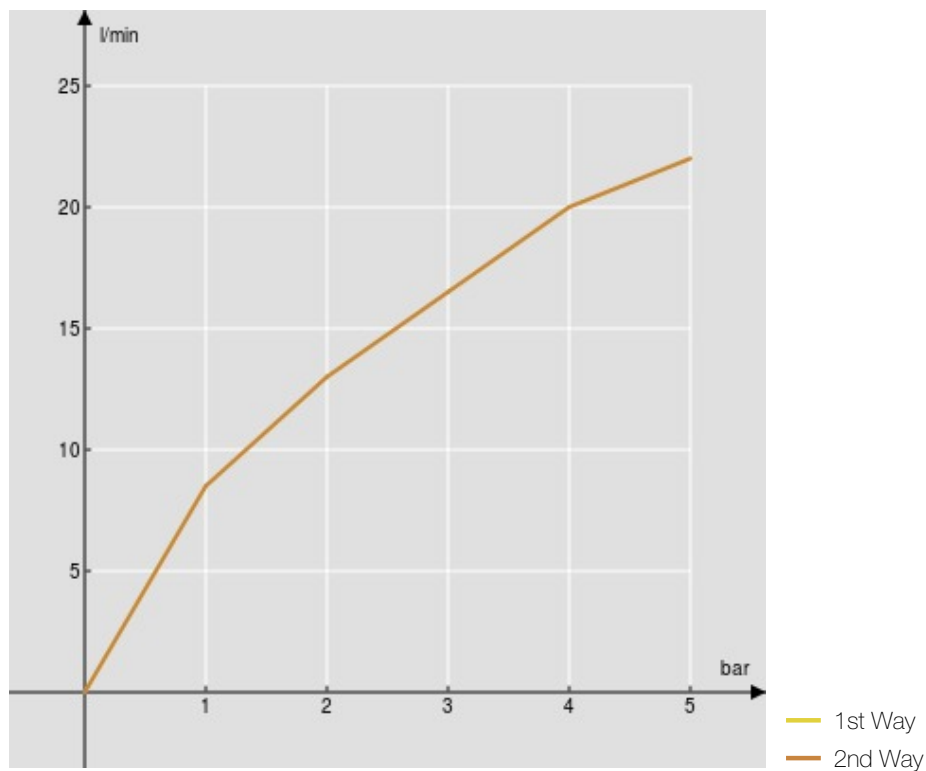
Packaging: 21 x 16,2 x 16,5 cm / 0,00561 m<sup>3</sup> / 2,29 kg

#### CERTIFICATIONS





FLOW RATE DIAGRAM: HOT/COLD WATER



FLOW RATE DIAGRAM: MIXED WATER

