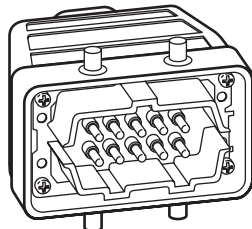
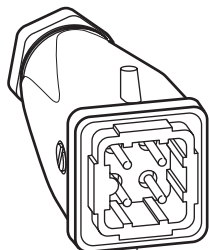


Hypra multipins connectors

Cat. Nos.: 526 00 to 526 27, 526 30 to 526 36, 526 40 to 526 48
526 50 to 526 58, 526 60/61/62/63/65/66/69/70/71/73/74/76/80
531 01/02/03, 531 06 to 531 13, 531 16 to 531 23/26/27/31/32/33
531 40/41/43/45, 531 50/51/53/54/55/58/61/62/63/65,
531 71 to 531 73, 531 80 to 531 87



CONTENTS	Page
1. Definition	1
2. Use	1
3. Range	2/4
4. Dimensions	5/8
5. Connection	8
6. Technical characteristics	9
7. Compliance with the standards	9
8. Curves	10/15
9. Accessories	16

1. DEFINITION

- **The main function of Hypra multipins connectors** is to answer the connection needs of power and control circuits.
- Application areas :
 - all types of industry (automotive industry, steel, etc...)
 - machine tool industry
 - industrial automation
 - information controls and transport, signalling.
- These products provide for various uses that can be combined or not on the same connector :
 - provision of low-intensity electric current (up to 32A)
 - control of remote controls and PLCs
 - transmission of data to control lights and indicators
 - star/delta motor starting for three-phase asynchronous motors that enables machines to be connected to 230V (delta) and 380V (star)
 - three-phase motor polarity change (e.g. : change of speed for Dahlander type two-speed motors, change in direction of rotation).

These products are used on industrial equipment and secondarily on commercial equipment. This equipment is usually fixed, except in the case of three-phase motors.

Type of equipment :

Injections presses, lifts, escalators and elevators, hoists, overhead cranes, automated lines, industrial robots, packaging machines, sound studios, building illumination, three-phase asynchronous electric motors, automation cabinets.

- Full compatibility with existing equipment
- Available in complete kit (male part + female part)
- Available by function (male part or female part)
- Spare parts on special request.

2. USE

Functionalities :

Bulkhead-mounting housing for cabinet mounting
Surface-mounting housing for offset mounting
Side hood : easy installation in reduced space
Top hood : for suspended use (e.g. : overhead crane).

Current and voltage :

10, 16A and 32A
250V in 3P+E
400V in 10A 4P+E and 32A 6P+E
500V for all other polarities.

2. USE (continued)

Polarity :

3P+E and 4P+E in 10A
6P+E in 16A and 32A
From 10P+E to 48P+E in 16A

Locking :

→ Single locking

For products 3P+E, 4P+E, 6P+E (16A) and 48P+E.

→ Double locking

For products 32A 6P+E, 16A 10P+E to 32P+E

Connection/disconnection cycles

Rated current	Connection	Connection cycles
16 A	screws	200
16 A	automatic (spring)	500
32 A	screws	200
10 A	screws	3-pole 50 4-pole 200

Breaking capacities

There is no breaking capacity requirement in IEC 61 984.

Connectors must not be connected or disconnected on load.

Cables entries

Bases and hoods have metric cable entries.

→ Hood with vertical entry

16A from 3P+E to 10P+E = M20
16A from 16P+E and 24P+E = M25
16A from 32P+E and 48P+E = M32
32A 6P+E = M25

→ Hood with side entry

16A from 3P+E to 10P+E = M20
16A from 16P+E and 24P+E = M25
16A from 32P+E and 48P+E = M32
32A 6P+E = M25

→ Surface mounted base

16A 6P+E and 10P+E = M20
16A 16P+E and 24P+E = M25
16A 48P+E = M32

Hypra multipins connectors

Cat. Nos.: 526 00 to 526 27, 526 30 to 526 36, 526 40 to 526 48
 526 50 to 526 58, 526 60/61/62/63/65/66/69/70/71/73/74/76/80
 531 01/02/03, 531 06 to 531 13, 531 16 to 531 23/26/27/31/32/33
 531 40/41/43/45, 531 50/51/53/54/55/58/61/62/63/65,
 531 71 to 531 73, 531 80 to 531 87

3. RANGE

CONNECTORS KITS 10 A - 250 V AND 400 V PLASTIC & METAL - IP 55

			Min. flush-mounted kit vertical output				Min. flush-mounted kit side output				Min. extension kit			
			Plastic		Metal		Plastic		Metal		Plastic		Metal	
			Pack	Cat. Nos	Pack	Cat. Nos	Pack	Cat. Nos	Pack	Cat. Nos	Pack	Cat. Nos	Pack	Cat. Nos
250 V	10 A	3P+E	10	526 18	8	531 18	8	531 20	8	531 22	10	526 16	8	531 16
400 V	10 A	4P+E	10	526 19	8	531 19	8	531 21	8	531 23	10	526 17	8	531 17

CONNECTORS KITS 32 A - 400 V AND 16 A - 500 V METAL - IP 65

			Flush-mounted kit vertical output ⁽¹⁾		Flush-mounted kit side output ⁽¹⁾		Flush-mounted kit side output with locking and flap		Flush-mounted ⁽¹⁾ kit vertical output		SPRING CONNECTION Surface-mounted kit side output ⁽¹⁾ (spring connection)	
			Pack	Cat. Nos	Pack	Cat. Nos	Pack	Cat. Nos	Pack	Cat. Nos	Pack	Cat. Nos
400 V	32 A	6P+E	2	526 15	2	526 05	-	-	-	-	-	-
500 V	16 A	6P+E	3	526 10	3	526 00	-	-	3	526 06	3	526 20
		10P+E	3	526 11	3	526 01	3	531 01	3	526 07	3	526 21
		16P+E	3	526 12	3	526 02	3	531 02	3	526 08	3	526 22
		24P+E	3	526 13	3	526 03	3	531 03	3	526 09	3	526 23
		32P+E	2	526 14	2	526 04	-	-	-	-	2	526 24

(1) Double locking from 10 P+E to 32 P+E

Hypra multipins connectors

Cat. Nos.: 526 00 to 526 27, 526 30 to 526 36, 526 40 to 526 48
 526 50 to 526 58, 526 60/61/62/63/65/66/69/70/71/73/74/76/80
 531 01/02/03, 531 06 to 531 13, 531 16 to 531 23/26/27/31/32/33
 531 40/41/43/45, 531 50/51/53/54/55/58/61/62/63/65,
 531 71 to 531 73, 531 80 to 531 87

3. RANGE (continued)

CONNECTORS 10 A - 250 V AND 400 V PLASTIC AND METAL - IP 55

			FLUSH MOUNTED BASES WITH LOCKING				MALE HOOD				PROTECTION FLAP				
			Vertical output		Side output		Vertical output		Side output		For female flush-mounted base with locking				
			Pack	Cat. No.	Pack	Cat. No.	Pack	Cat. No.	Pack	Cat. No.	Pack	Cat. No.			
250 V	10 A	3P+E	Plastic	10	526 50	10	531 06	10	526 40	10	531 10	10	526 69		
		3P+E	Metal	10	531 50	10	531 08	10	531 40	10	531 12				
400 V	10 A	4P+E	Plastic	10	526 51	10	531 07	10	526 41	10	531 11				
		4P+E	Metal	10	531 51	10	531 09	10	531 41	10	531 13				

CONNECTORS 32 A - 400 V AND 16 A - 500 V METAL - IP 65

			FEMALE BASE WITH LOCKING				MALE HOOD							
			Flush-mounted	Surface-mounted	Surface-mounted with 2 cables entries		Vertical output	Side output	For female flush-mounted base with locking					
			Pack	Cat. No.	Pack	Cat. No.	Pack	Cat. No.	Pack	Cat. No.	Pack	Cat. No.		
400 V	32 A	6P+E	4	526 57	-	-	4	526 47	4	526 35	5	526 76		
		6P+E	5	526 52	5	526 60	5	526 42	5	526 30	5	526 70		
		10P+E	5	526 53	5	526 61	4	531 71	5	526 43	5	526 31	5	526 71
500 V	16 A	16P+E	5	526 54	5	526 62	4	531 72	5	526 44	5	526 32	5	526 76
		24P+E	5	526 55	5	526 63	4	531 73	5	526 45	5	526 33	5	526 73
		32P+E	4	526 56	-	-	-	-	4	526 46	4	526 34	2	526 74
		48P+E	2	526 58	2	526 65	-	-	2	526 48	2	526 36	-	-

			FEMALE BASE WITH FLAP				MALE HOOD WITH LOCKING	
			Flush mounted		Surface mounted		Side output	
			Pack	Cat. No.	Pack	Cat. No.	Pack	Cat. No.
500 V	16 A	10P+E	5	531 53	5	531 61	5	531 31
		16P+E	5	531 54	5	531 62	5	531 32
		24P+E	5	531 55	5	531 63	5	531 33
		48P+E	2	531 58 ⁽¹⁾	2	531 65 ⁽¹⁾	-	-

(1) Cat. Nos. 531 58/65 in 48P+T with locking must be connected with 526 48 or 526 36

Hypra multipins connectors

Cat. Nos.: 526 00 to 526 27, 526 30 to 526 36, 526 40 to 526 48
 526 50 to 526 58, 526 60/61/62/63/65/66/69/70/71/73/74/76/80
 531 01/02/03, 531 06 to 531 13, 531 16 to 531 23/26/27/31/32/33
 531 40/41/43/45, 531 50/51/53/54/55/58/61/62/63/65,
 531 71 to 531 73, 531 80 to 531 87

3. RANGE (continued)

				EXTENSIONS						
				Female hood with locking vertical output		+	Male hood vertical output		Protection cover for female hood with locking	
				Pack	Cat. No.		Pack	Cat. No.	Pack	Cat. No.
250 V	10 A	3P+E	Plastic	10	526 26	+	10	526 40	10	526 69
			Metal	10	531 26		10	531 40		
400 V	10 A	4P+E	Plastic	10	526 27		10	526 41		
			Metal	10	531 27		10	531 41		

				FLUSH MOUNTED BASE WITH FEMALE SHORT TERMINAL BLOCK				MALE HOOD				
				Earth at left		Spring connection	Earth at right		Vertical output		Side output	
				Pack	Cat. No.		Pack	Cat. No.	Pack	Cat. No.	Pack	Cat. No.
500 V	16 A	6P+E	3	531 80	3	531 84	5	526 42	5	526 30		
		10P+E	3	531 81	3	531 85	5	526 43	5	526 31		
		16P+E	2	531 82	2	531 86	5	526 44	5	526 32		
		24P+E	2	531 83	2	531 87	5	526 45	5	526 33		

				EXTENSIONS				ACCESSORIES		
				Male hood vertical output		+	Female hood with locking vertical output		Footproofing pins for bases	
				Pack	Cat. No.		Pack	Cat. No.	Pack	Cat. No.
500 V	16 A	10P+E	5	526 43	5	531 43	10	526 80		
		16P+E	5	526 44	5	531 44				
		24P+E	5	526 45	5	531 45				

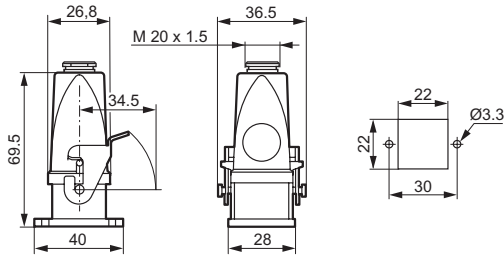
Hypra multipins connectors

Cat. Nos.: 526 00 to 526 27, 526 30 to 526 36, 526 40 to 526 48
 526 50 to 526 58, 526 60/61/62/63/65/66/69/70/71/73/74/76/80
 531 01/02/03, 531 06 to 531 13, 531 16 to 531 23/26/27/31/32/33
 531 40/41/43/45, 531 50/51/53/54/55/58/61/62/63/65,
 531 71 to 531 73, 531 80 to 531 87

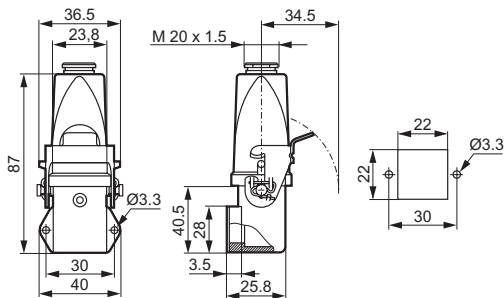
4. DIMENSIONS

10 A extension kit

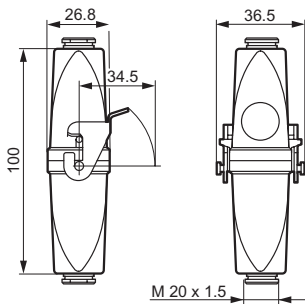
Flush-mounted vertical out (Cat. Nos 526 18/19 and 531 18/19)



Flush-mounted side output (Cat. Nos 531 20/21/22/23)

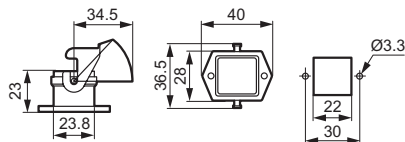


Extension (Cat. Nos 526 16/17 and 531 16/17)



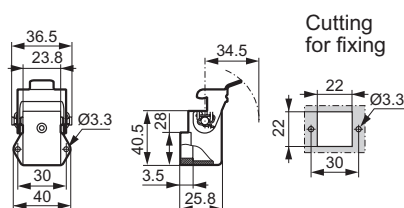
Female flush-mounted base

250 V - 10 A - 3P+E and 400 V - 10 A 4P+E plastic (Cat. Nos 526 50/51) and metal (Cat. Nos 531 50/51)



Female flush-mounted base side output

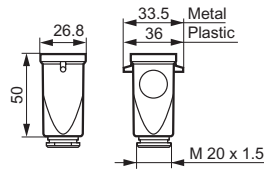
250 V - 10 A - 3P+E and 400 V - 10 A 4P+E plastic (Cat. Nos 531 06/07) and metal (Cat. Nos 531 08/09)



4. DIMENSIONS (continued)

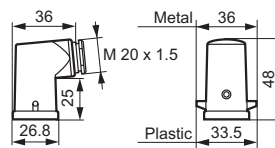
Male hood vertical output

250 V - 10 A - 3P+E and 400 V - 10 A 4P+E (Cat. Nos 526 40/41 and 531 40/41)



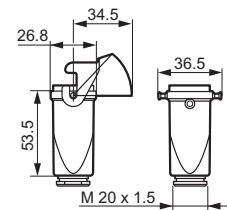
Male hood side output

250 V - 10 A - 3P+E and 400 V - 10 A 4P+E (Cat. Nos 531 10/11/12/13)



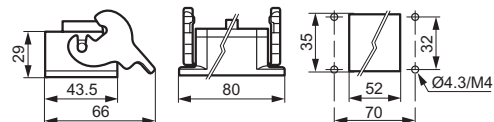
Extension locking on hood

250 V - 10 A - 3P+E and 400 V - 10 A 4P+E (Cat. Nos 526 26/27 and Cat. Nos 531 26/27)

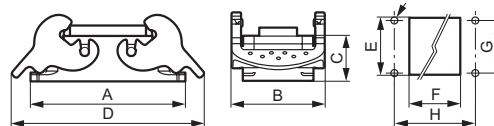


Female flush-mounted base

500 V - 16 A - 6P+E (Cat.No 526 52)



400 V - 32 A - 6P+E (Cat.No 526 57) and 500 V - 16 A - 10 to 32P+E (Cat. Nos 526 53/54/55/56)



Intensity	Cat. Nos	Polarity	A	B	C	D	E	F	G	H	Ø Drilling threading
16 A	526 53	10P+E	93	43	28	115	35	65	32	83	4.3/M4
	526 54	16P+E	113	43	28	137	35	85.5	32	103	4.3/M4
	526 55	24P+E	140	43	28	164	35	112	32	130	4.3/M4
	526 56	32P+E	124	84	35	158	71	86	65	110	4.3/M4
32 A	526 57	6P+E	113	43	28	137	35	85.5	32	103	5.5/M5

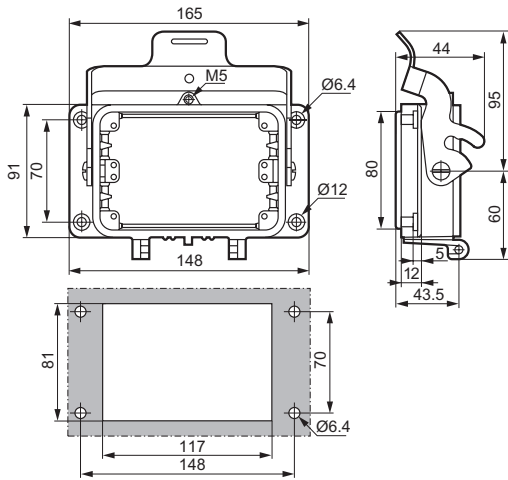
Hypra multipins connectors

Cat. Nos.: 526 00 to 526 27, 526 30 to 526 36, 526 40 to 526 48
 526 50 to 526 58, 526 60/61/62/63/65/66/69/70/71/73/74/76/80
 531 01/02/03, 531 06 to 531 13, 531 16 to 531 23/26/27/31/32/33
 531 40/41/43/45, 531 50/51/53/54/55/58/61/62/63/65,
 531 71 to 531 73, 531 80 to 531 87

4. DIMENSIONS (continued)

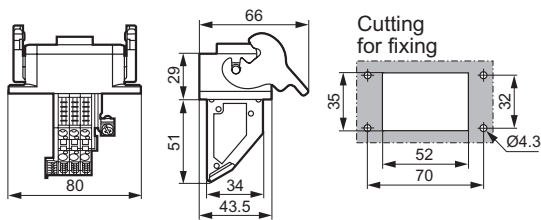
Flush-mounted base

500 V - 16 A - 48P+E (Cat. No 526 58)



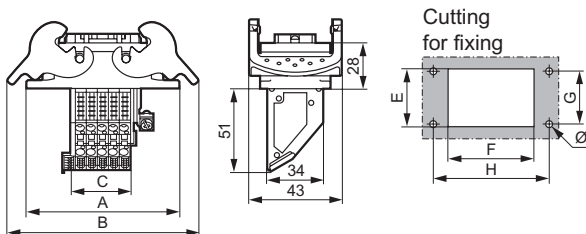
Flush-mounted base with adaptor with spring connection

500 V - 16 A - 6P+E (Cat. Nos 531 80/84)



500 V - 16 A - 10 to 24P+E

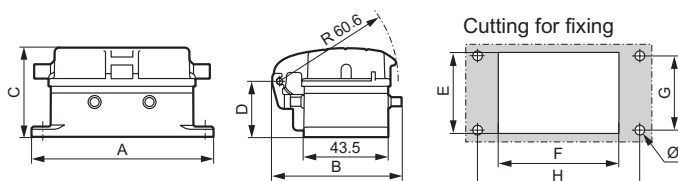
(Cat. Nos 531 81/82/83/85/86/87)



Intensity	Polarity	A	B	C	E	F	G	H	Ø Drilling threading
16 A	10P+E	93	115	36.5	35	65	32	83	4.3/M4
	16P+E	113	137	56.6	35	85.5	32	103	4.3/M4
	24P+E	140	164	83.4	35	112	32	130	4.3/M4

Flush-mounted base with flap

500 V - 16 A - 10 to 24P+E (Cat. Nos 531 53/54/55)

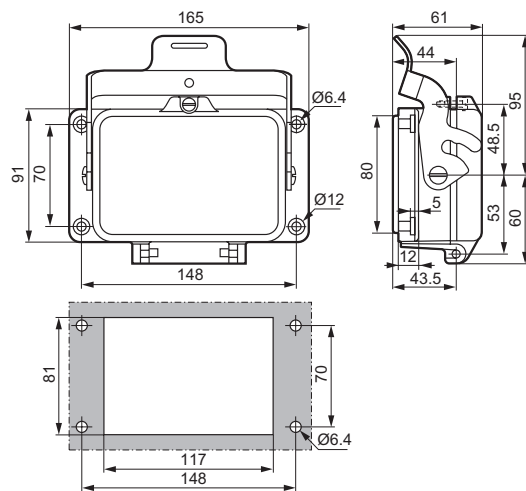


Intensity	Polarity	A	B	C	D	E	F	G	H	Ø Drilling threading
16 A	10P+E	93	67	46	29	35	65	32	83	4.5/M4
	16P+E	113	66	46	29	35	85.5	32	103	4.5/M4
	24P+E	140	67	46	29	35	112	32	130	4.5/M4

4. DIMENSIONS (continued)

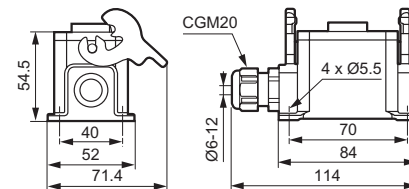
Female flush-mounted base with flap

500 V - 16 A - 48P+E (Cat. No 53158)

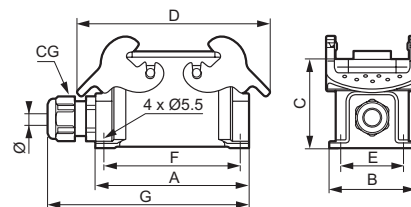


Surface-mounted base

500 V - 16 A - 6P+E (Cat. No 526 60)

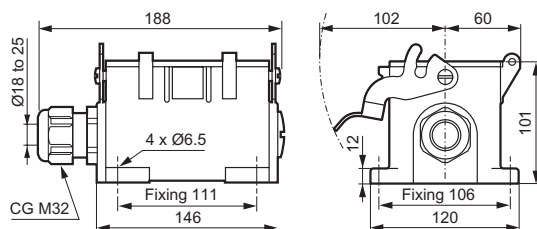


500 V - 16 A - 10 to 24P+E (Cat. Nos 526 61/62/63)



Intensity	Cat. Nos	Polarity	A	B	C	D	E	F	G	CG	Ø Tightening
16 A	526 61	10P+E	94	52	54.5	117	40	82	124	M20	6-12
	526 62	16P+E	117	57	56.5	138	45	105	153	M25	12-18
	526 63	24P+E	144	57	56.5	164	45	132	179	M25	12-18

500 V - 16 A - 48P+E (Cat. No 526 65)



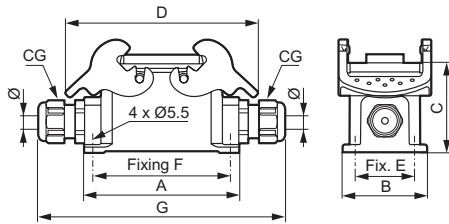
Hypra multipins connectors

Cat. Nos.: 526 00 to 526 27, 526 30 to 526 36, 526 40 to 526 48
 526 50 to 526 58, 526 60/61/62/63/65/66/69/70/71/73/74/76/80
 531 01/02/03, 531 06 to 531 13, 531 16 to 531 23/26/27/31/32/33
 531 40/41/43/45, 531 50/51/53/54/55/58/61/62/63/65,
 531 71 to 531 73, 531 80 to 531 87

4. DIMENSIONS (continued)

Surface-mounted base with 2 entries

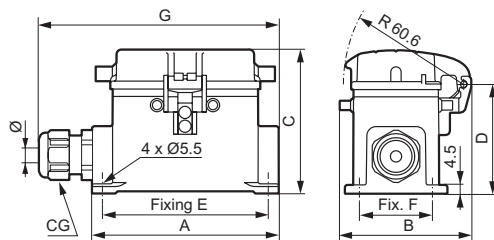
500 V - 16 A - 10 to 24P+E (Cat. Nos 531 71/72/73)



Intensity	Cat. Nos	Polarity	A	B	C	D	E	F	G	CG	Ø
16 A	531 71	10P+E	94	52	54.5	117	40	82	154	M20	6-12
	531 72	16P+E	117	57	56.5	138	45	105	189	M25	12-18
	531 73	24P+E	144	57	56.5	164	45	132	214	M25	12-18

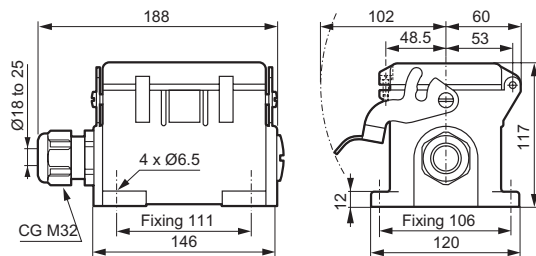
Surface-mounted base with flap

500 V - 16 A - 10 to 24P+E (Cat. Nos 531 61/62/63)



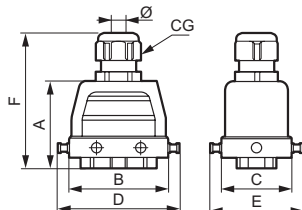
Intensity	Cat. Nos	Polarity	A	B	C	D	E	F	G	CG	Ø
16 A	531 61	10P+E	94	67	72	55.6	82	40	124	M20	6-12
	531 62	16P+E	117	67	74	57.6	105	45	153	M25	12-18
	531 63	24P+E	144	67	74	57.6	132	45	179	M25	12-18

500 V - 16 A - 48P+E (Cat. No 531 65)



Male hood vertical output

400 V - 32 A - 6P+E and 500 V - 16 A - 6P+E to 48P+E (Cat. Nos 526 42 to 526 48)

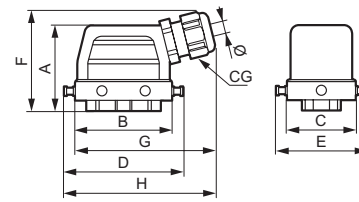


Intensity	Cat. Nos	Polarity	A	B	C	D	E	F	CG	Ø
16 A	526 42	6P+E	47,5	60	43	73,5	-	75,5	M20	6-12
	526 43	10P+E	53	73	43	-	56	81	M20	6-12
	526 44	16P+E	60	93,5	43	-	56	95	M25	12-18
	526 45	24P+E	70	120	43	-	56	105	M25	12-18
	526 46	32P+E	94	93,5	82,5	-	97,5	134	M32	18-25
	526 48	48P+E	107	132	90	146	-	147	M32	18-25
32 A	526 47	6P+E	60	93,5	43	-	56	95	M25	12-18

4. DIMENSIONS (continued)

Male hood side output

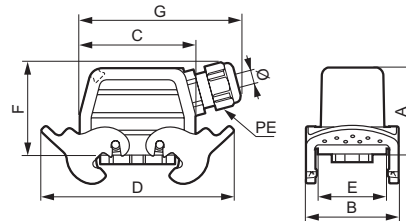
400 V - 32 A (Cat. No 526 35) - 6P+E and 500 V - 16 A - 6P+E to 32P+E (Cat. Nos 526 30/31/32/33/34/36)



Intensity	Cat. Nos	Polarity	A	B	C	D	E	F	G	H	CG	Ø
16 A	526 30	6P+E	47,5	60	43	73,5	-	56	-	95	M20	6-12
	526 31	10P+E	53	73	43	-	56	61,5	101	-	M20	6-12
	526 32	16P+E	60	93,5	43	-	56	65	125	-	M25	12-18
	526 33	24P+E	70	120	43	-	56	71	151	-	M25	12-18
	526 34	32P+E	94	93,5	82,5	-	97,5	90	129	-	M32	18-25
	526 36	48P+E	107	132	90	146	-	107	-	171	M32	18-25
32 A	526 35	6P+E	60	93,5	43	-	56	65	125	-	M25	12-18

Male hood with locking side output

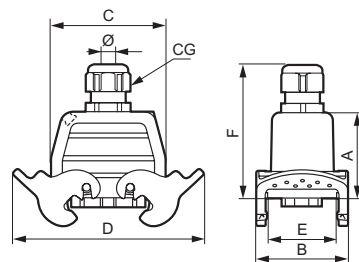
500 V - 16 A - 10P+E / 24P+E / 32P+E (Cat. Nos 531 31/32/33)



Intensity	Cat. Nos	Polarity	A	B	C	D	E	F	G	CG	Ø
16 A	531 31	10P+E	53	56	73	119	43	61,5	101	M20	6-12
	531 32	16P+E	60	56,4	93,5	139	43	65	125	M25	12-18
	531 33	24P+E	70	56,4	120	166	43	71	166	M25	12-18

Female hood with locking vertical output

500 V - 16 A - 10P+E and 24P+E (Cat. Nos 531 43/44/45)



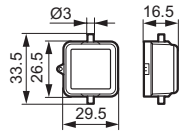
Intensity	Cat. Nos	Polarity	A	B	C	D	E	F	CG	Ø
16 A	531 43	10P+E	55	57,2	73	119	43	83	M20	6-12
	531 44	16P+E	62	57,2	93,5	139	43	97	M25	12-18
	531 45	24P+E	72	57,2	120	166	43	107	M25	12-18

Hypra multipins connectors

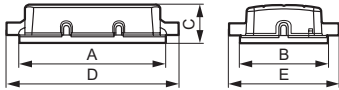
Cat. Nos.: 526 00 to 526 27, 526 30 to 526 36, 526 40 to 526 48
 526 50 to 526 58, 526 60/61/62/63/65/66/69/70/71/73/74/76/80
 531 01/02/03, 531 06 to 531 13, 531 16 to 531 23/26/27/31/32/33
 531 40/41/43/45, 531 50/51/53/54/55/58/61/62/63/65,
 531 71 to 531 73, 531 80 to 531 87

4. DIMENSIONS (continued)

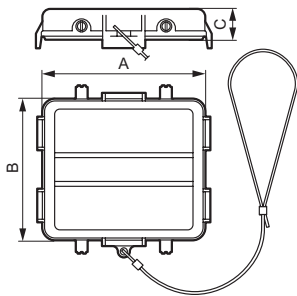
Protection flap for female base with locking 3P+E and 4P+E
 (Cat. Nos 526 69)



6P+E to 32P+E (Cat. Nos 526 70/71/73/74/76)



Intensity	Cat. Nos	Polarities	A	B	C	D	E
16 A	526 70	6P+E	62.5	45.5	20	75	-
	526 71	10P+E	75.5	45.5	20	-	57.2
	526 76	16P+E	96	45.5	20	-	57.2
	526 73	24P+E	122.5	45.5	20	-	57.2
32 A	526 76	6P+E	96	45.5	20	-	57.2



Intensity	Cat. No	Polarity	A	B	C
16 A	526 74	32P+E	93.5	82.5	23

5. CONNECTION

- Increasing numbering of contacts marking on both sides.
- Fool proofing system by insert shape.
- Power screwdrivers can be used thanks to the screwdriver guide.

Screw connection

- Captive screws
- Terminal supplied in opened position
- 10A : 0.5 - 2.5 mm² (22-12 AWG) - 4 mm of stripping
- 16A : 0.5 - 2.5 mm² (20-12 AWG) - 7 mm of stripping
- 32A : 2.5 - 6 mm² (14-8 AWG) - 10 mm of stripping

Spring connection

- Complete kit flush mounting base + hood side output 16A from 6P+E to 24P+E.
- 16A : 0.14 - 2.5mm² (26-12 AWG) - 7 mm of stripping

NOTE :

The earth conductors have a cross-section at least equivalent to the largest cross-section of the phase conductors.

- For the flush mounting bases with terminal block.
- 16A : 0.5 - 2.5mm² (20-12 AWG) - 9 mm of stripping

Conductors

Number of conductors which can be fitted in the screw terminals and the spring terminals

10A screw : 2 x 0.5 mm² until 2 x 1.5 mm²

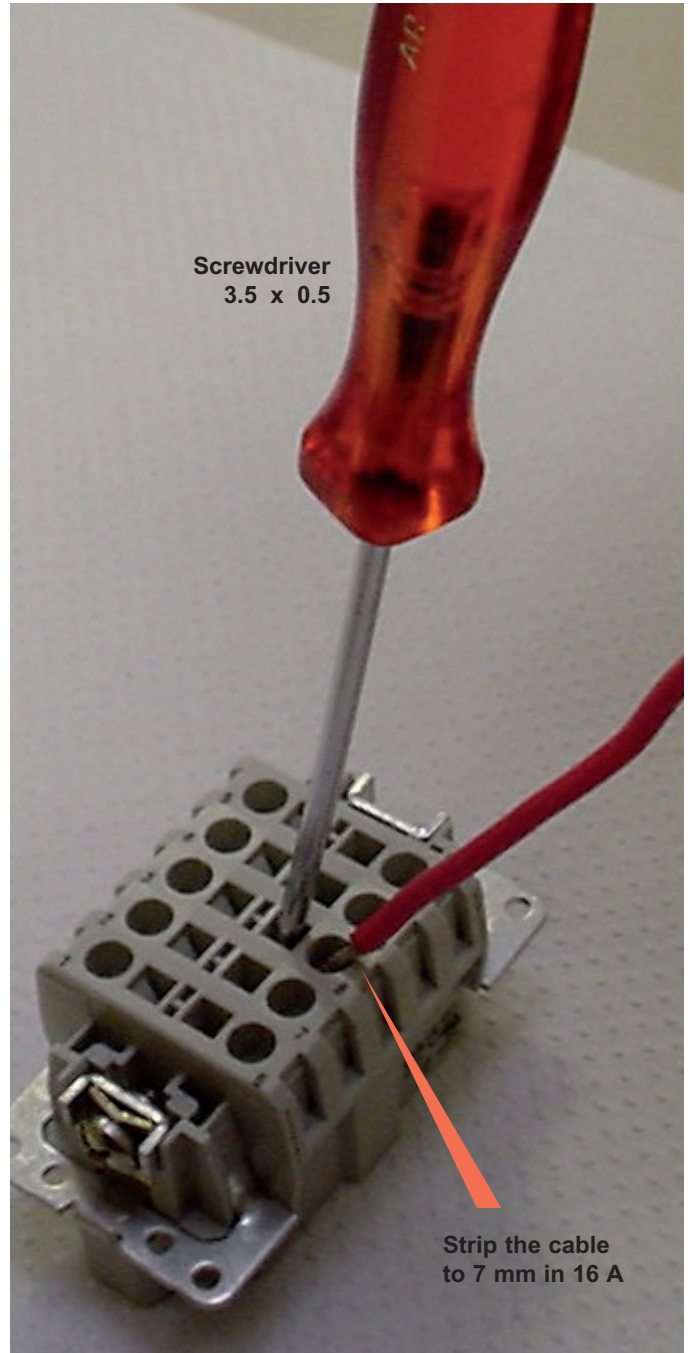
16A screw : 2 x 0.5 mm² until 2 x 1.5 mm²

32A screw : 2 x 2.5 mm² until 2 x 4.0 mm²

16A spring : it's not possible to connect more than 1 conductor per pole.

5. CONNECTION (continued)

Cablings of spring terminal



6. GENERAL CHARACTERISTICS

The various tests

6.1 Glow wire and Use temperatures

- 850° contact support (inserts)
- 650° enclosure (plastic)
- Use temperature : - 40°C /+100°C

6.2 UV resistance

- No alteration of the material
- Radiation intensity: 550 W/m
- Test duration : 168 hours
- Infrared and ultra-violet filter in order to get as close to the solar spectrum as possible

6.3 Shock withstand voltage and degree of pollution

- 6 Kilovolts
- 4 Kilovolts for 10A products
- Degree of pollution : 3

6.4 Weatherproofing and IK

- 10A : IP 55 connected
- 16/32A : IP 65 connected
- The hoods and bases are IK 08.

6.5 Material of components

- ROHS compliance
- base and hood body : metal
 - the 3P+E and 4P+E versions are also available in plastic
 - contacts : traited brass
 - contact supports : plastic
 - insert fixing screws : zinc-coated steel
 - connection screws : tinned steel
 - seal : neoprene


6. GENERAL CHARACTERISTICS (continued)


6.6 Colour resistance

Test	1 day	2 days	10 days	1 month	3 months	6 months
hydrochloric acid 10%	Green	Green	Orange	Orange	Yellow	Yellow
sulphuric acid 10%	Green	Green	Green	Orange	Orange	Yellow
sulphuric acid 40%	Green	Green	Orange	Yellow	Yellow	Yellow
nitric acid 10%	Green	Green	Orange	Orange	Yellow	Red
phosphoric acid 10%	Green	Green	Green	Orange	Orange	Yellow
acetic acid 3%	Green	Green	Green	Orange	Yellow	Red
acetic acid 10%	Green	Green	Orange	Yellow	Red	Red
lactic acid 10%	Green	Green	Green	Green	Green	Green
soda lye 10%	Green	Green	Orange	Yellow	Red	Red
soda lye 40%	Orange	Orange	Yellow	Red	Red	Red
ammonia 10%	Orange	Yellow	Red	Red	Red	Red
ammonia 24%	Orange	Yellow	Red	Red	Red	Red
bleach	Green	Green	Orange	Yellow	Red	Red
soda 1%	Green	Green	Green	Green	Green	Green
soda 10%	Green	Green	Green	Green	Green	Green
formaldehyde 37%	Green	Green	Green	Green	Orange	Orange
deionised water	Green	Green	Green	Green	Green	Green
sea water	Green	Green	Green	Green	Orange	Orange
ethanol 25%	Green	Green	Green	Green	Green	Green
ethanol 95%	Green	Green	Green	Green	Orange	Orange
ethyl acetate	Yellow	Yellow	Red	Red	Red	Red
ethyl glycol	Yellow	Yellow	Red	Red	Red	Red
toluol	Yellow	Yellow	Red	Red	Red	Red
xylol	Yellow	Yellow	Red	Red	Red	Red
petrol mixture	Yellow	Yellow	Yellow	Red	Red	Red
leadet petrol	Orange	Orange	Orange	Orange	Orange	Orange
kerosene	Green	Green	Green	Green	Green	Orange
domestic fuel-oil	Green	Green	Green	Green	Green	Orange
PVA binder	Green	Green	Green	Green	Green	Green
acrylic dispersion	Green	Green	Green	Green	Green	Green

 = good resistance

 = medium resistance

 = no resistance

 = test stopped

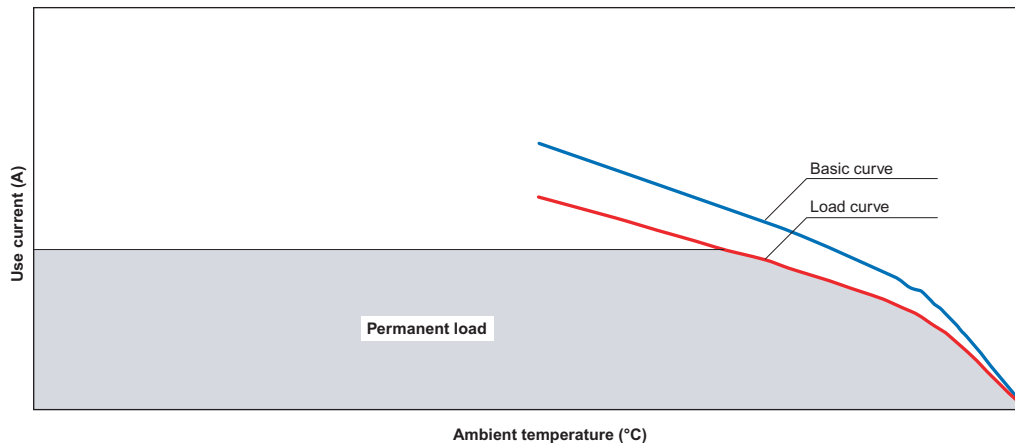
7 COMPLIANCE WITH THE STANDARDS

- Compliance with standards NF EN 61 984 and CEI 61 984
- Compliance with standards NF EN 60 529 and CEI 60 529 (IP)
- Compliance with standards NF EN 62 262 and CEI 62 262 (IK)
- Approvals : UL, CSA

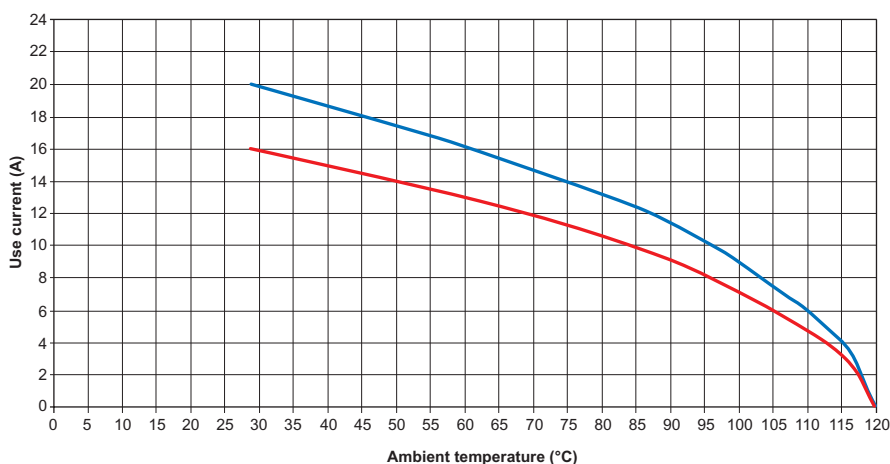
8. CURVES

Basic curve and load curve

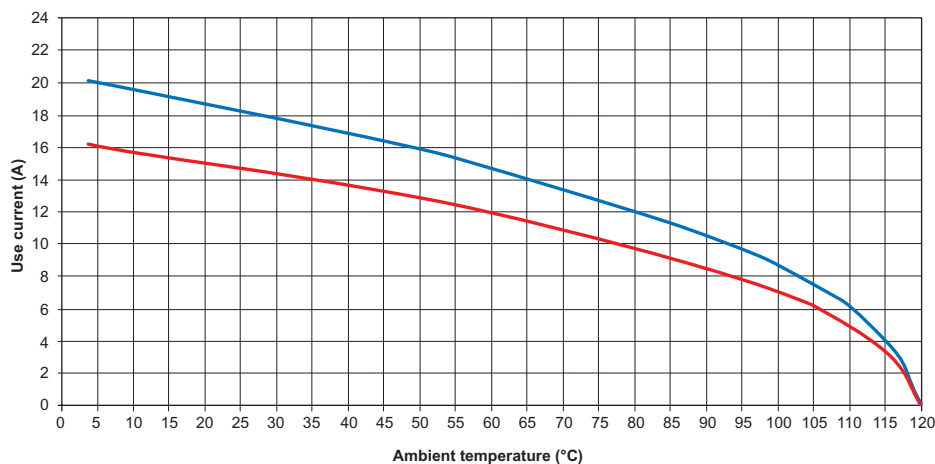
- The permanent charge load is to be selected in the bottom zone of the load curve, without exceeding the intensity of the insert.
- The load curve is deduced from the basic curve to which a safety factor is applied.



Screw connection 6 P+E 1.5 mm²



Screw connection 10 P+E 1.5 mm²

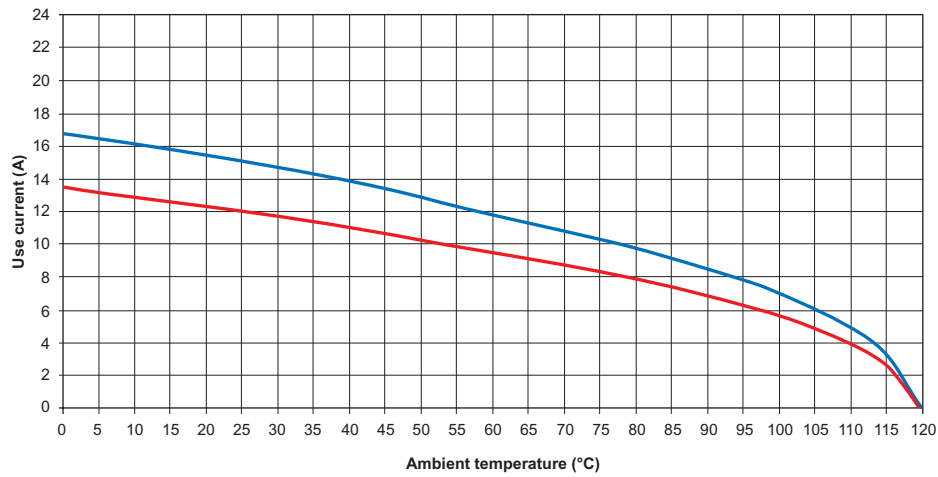


Hypra multipins connectors

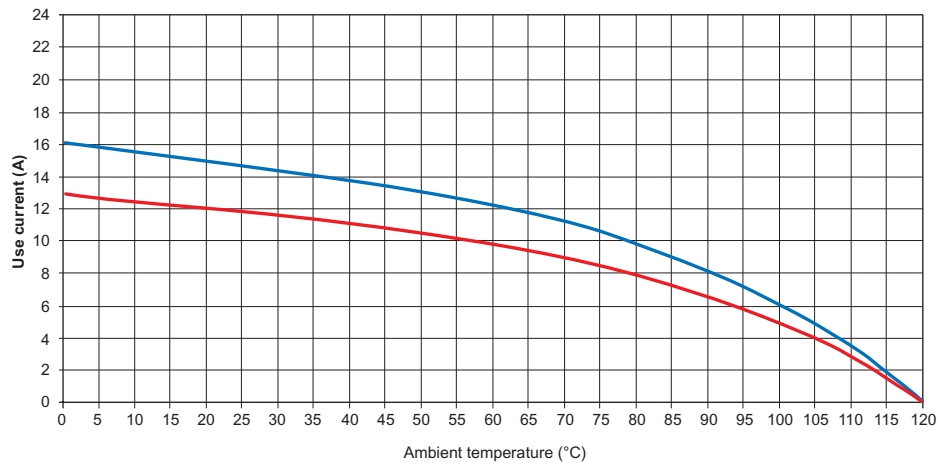
Cat. Nos.: 526 00 to 526 27, 526 30 to 526 36, 526 40 to 526 48
526 50 to 526 58, 526 60/61/62/63/65/66/69/70/71/73/74/76/80
531 01/02/03, 531 06 to 531 13, 531 16 to 531 23/26/27/31/32/33
531 40/41/43/45, 531 50/51/53/54/55/58/61/62/63/65,
531 71 to 531 73, 531 80 to 531 87

8. CURVES (continued)

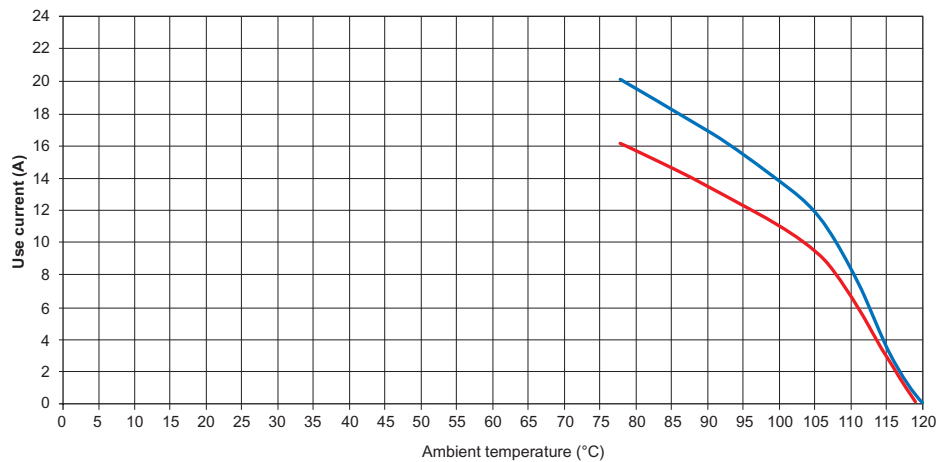
Screw connection 16 P+E 1.5 mm²



Screw connection 24 P+E 1.5 mm²



Screw connection 6 P+E 2.5 mm²

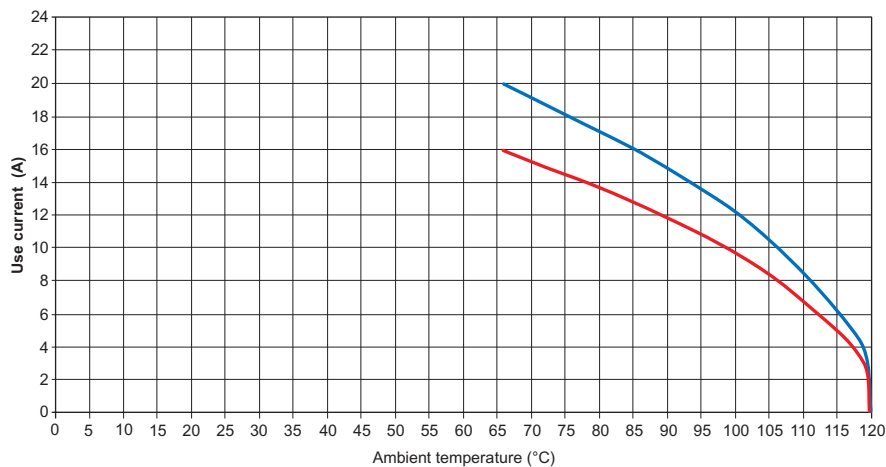


Hypra multipins connectors

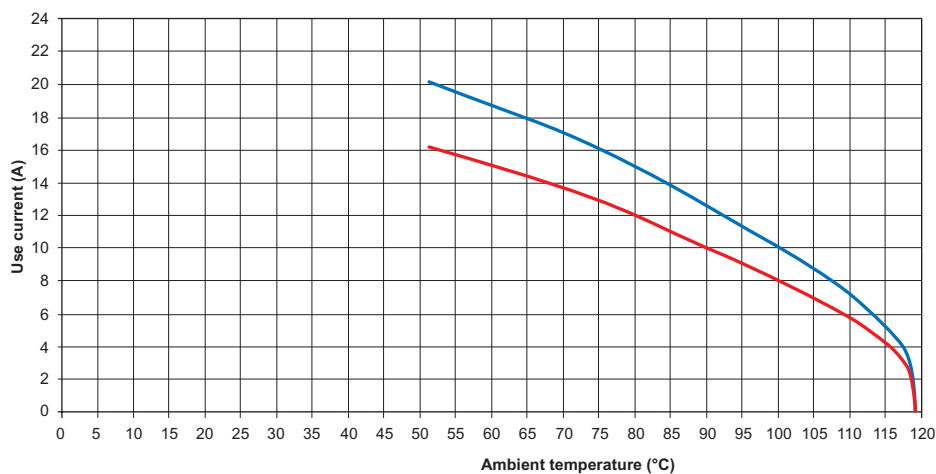
Cat. Nos.: 526 00 to 526 27, 526 30 to 526 36, 526 40 to 526 48
526 50 to 526 58, 526 60/61/62/63/65/66/69/70/71/73/74/76/80
531 01/02/03, 531 06 to 531 13, 531 16 to 531 23/26/27/31/32/33
531 40/41/43/45, 531 50/51/53/54/55/58/61/62/63/65,
531 71 to 531 73, 531 80 to 531 87

8. CURVES (continued)

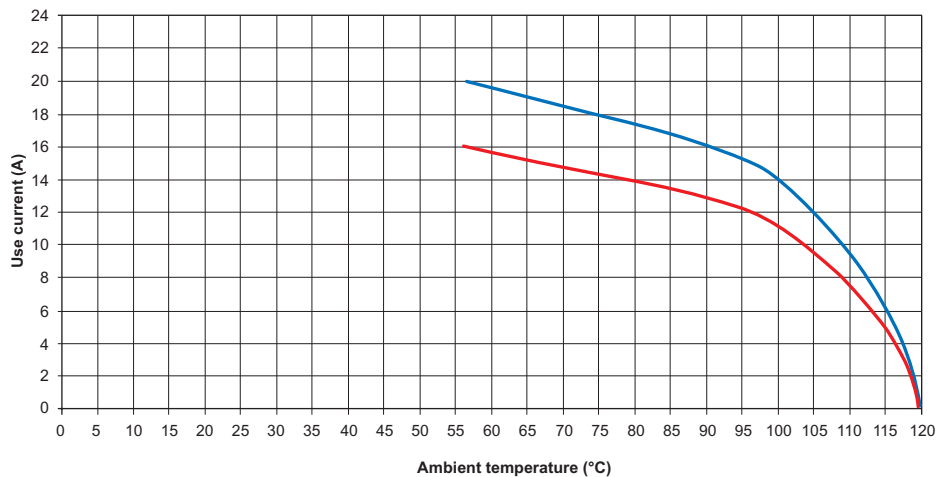
Screw connection 10 P+E 2.5 mm²



Screw connection 16 P+E 2.5 mm²



Screw connection 24 P+E 2.5 mm²

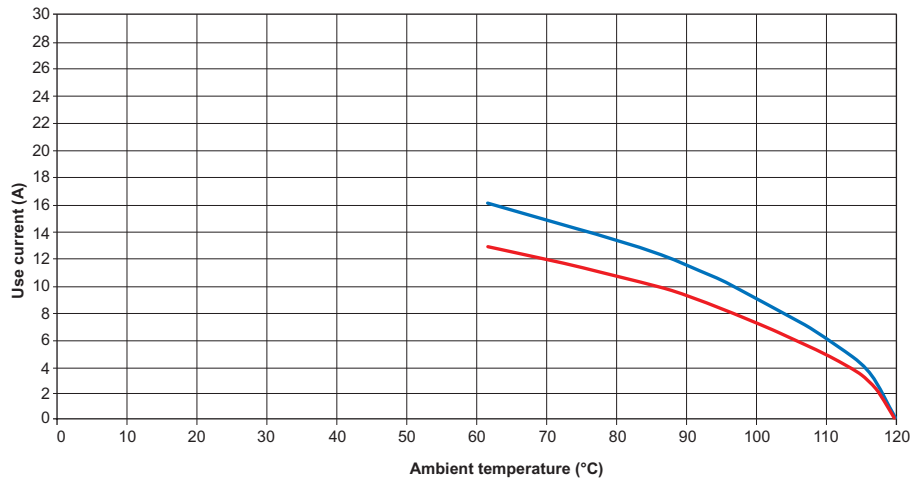


Hypra multipins connectors

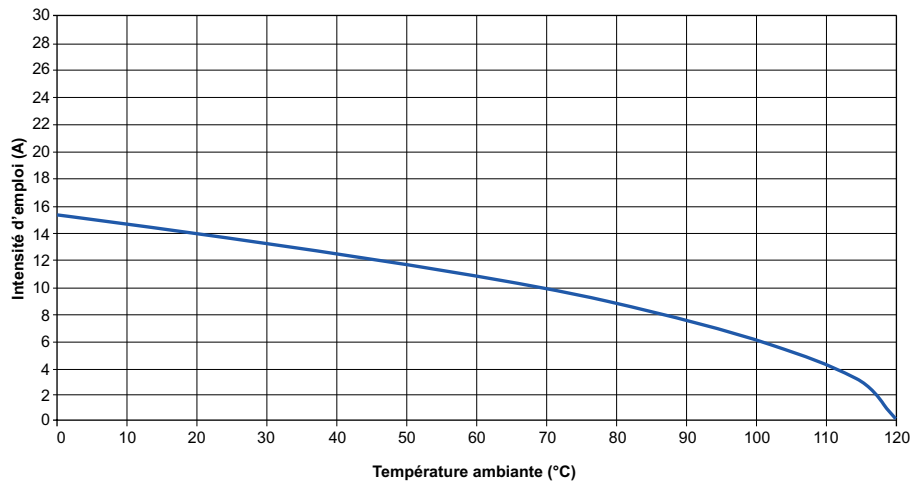
Cat. Nos.: 526 00 to 526 27, 526 30 to 526 36, 526 40 to 526 48
526 50 to 526 58, 526 60/61/62/63/65/66/69/70/71/73/74/76/80
531 01/02/03, 531 06 to 531 13, 531 16 to 531 23/26/27/31/32/33
531 40/41/43/45, 531 50/51/53/54/55/58/61/62/63/65,
531 71 to 531 73, 531 80 to 531 87

8. CURVES (continued)

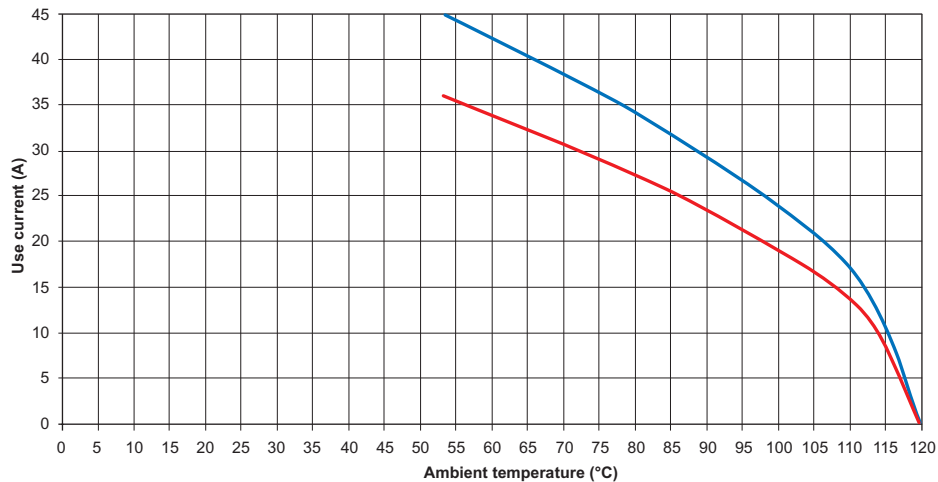
Screw connection 32 P+E 2.5 mm²



Screw connection 48 P+E 2.5 mm²

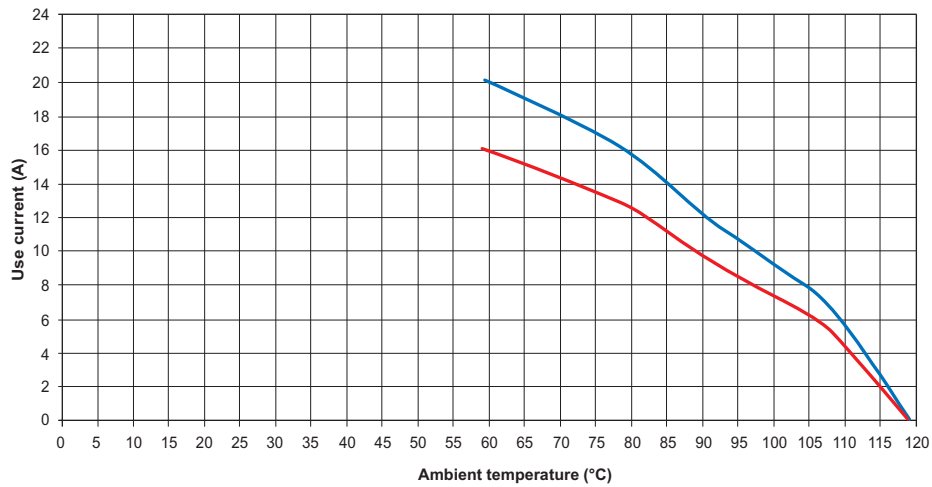


Screw connection 400V 32A, 6 P+E 6 mm²

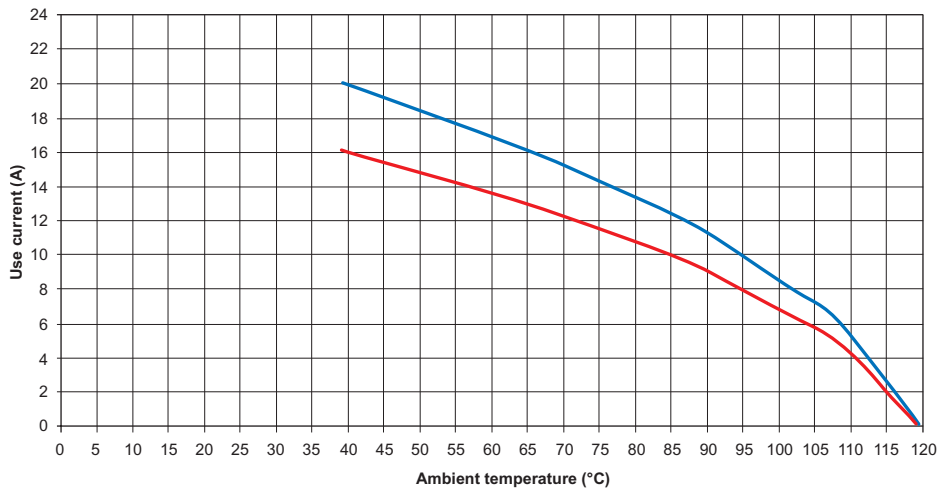


8. CURVES (continued)

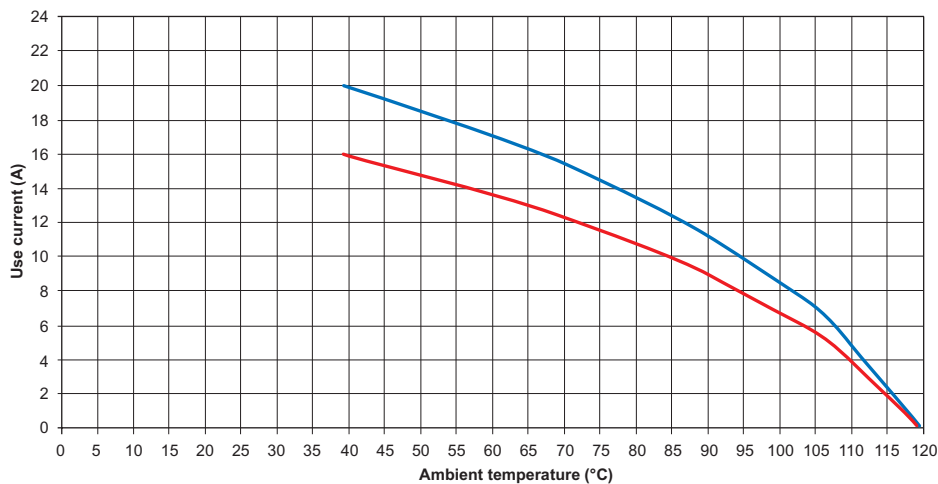
Spring connection 6 P+E 2.5 mm²



Spring connection 10 P+E 2.5 mm²



Spring connection 16 P+E 2.5 mm²

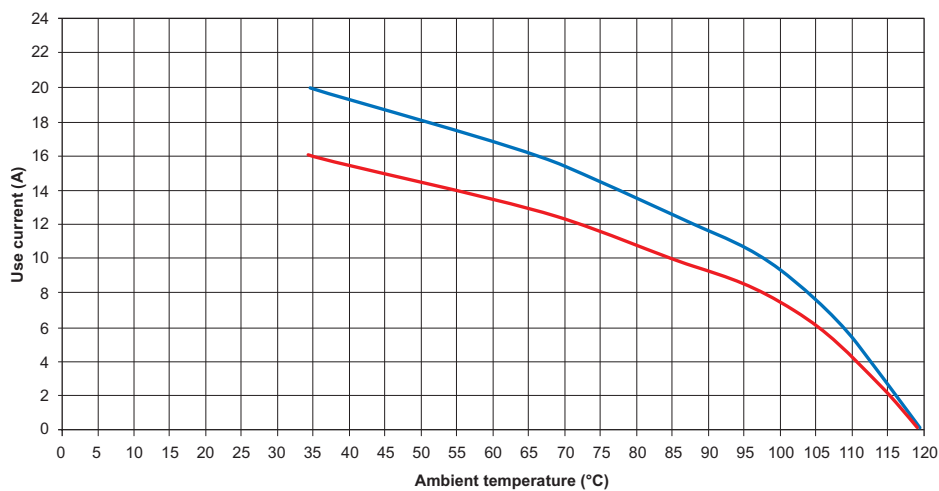


Hypra multipins connectors

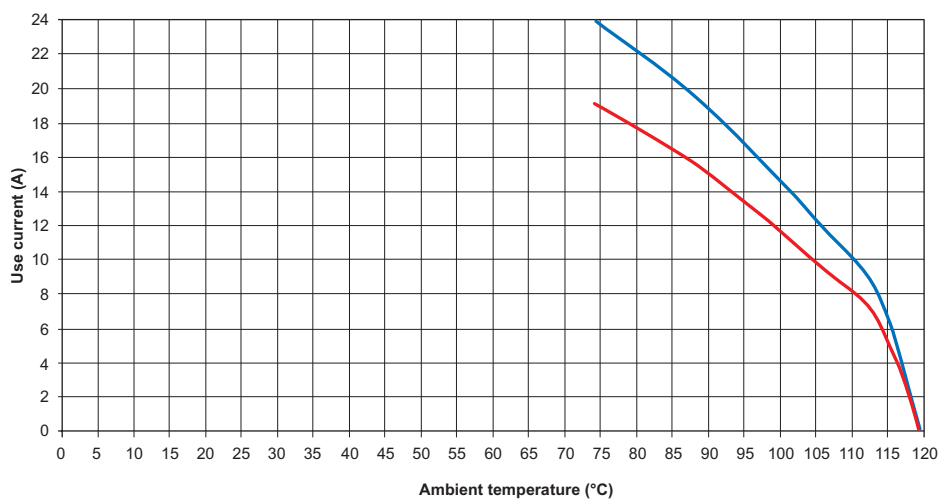
Cat. Nos.: 526 00 to 526 27, 526 30 to 526 36, 526 40 to 526 48
526 50 to 526 58, 526 60/61/62/63/65/66/69/70/71/73/74/76/80
531 01/02/03, 531 06 to 531 13, 531 16 to 531 23/26/27/31/32/33
531 40/41/43/45, 531 50/51/53/54/55/58/61/62/63/65,
531 71 to 531 73, 531 80 to 531 87

8. CURVES (continued)

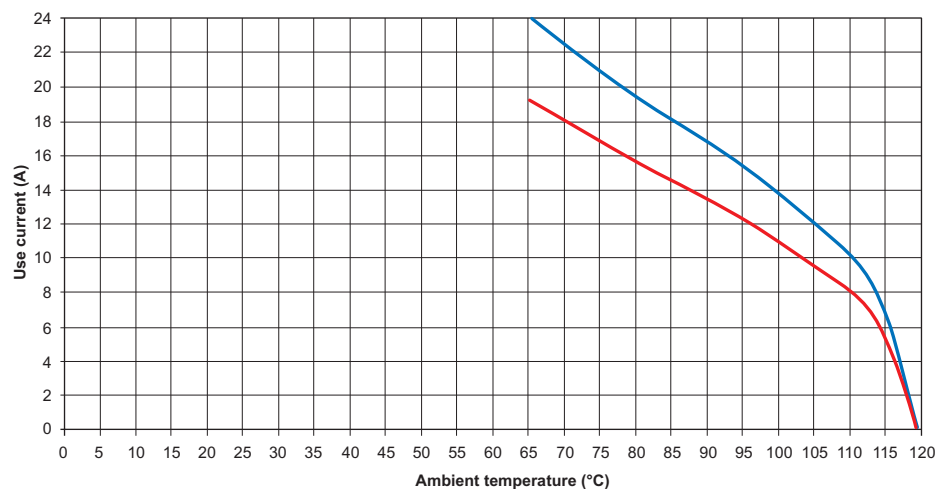
Spring connection 24 P+E 2.5 mm²



Screw connection 3 P+E 2.5 mm²



Screw connection 4 P+E 2.5 mm²



Hypra multipins connectors

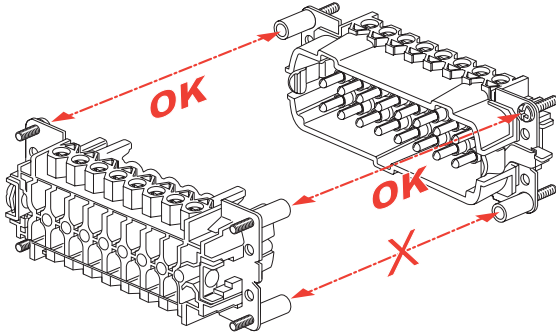
Cat. Nos.: 526 00 to 526 27, 526 30 to 526 36, 526 40 to 526 48
 526 50 to 526 58, 526 60/61/62/63/65/66/69/70/71/73/74/76/80
 531 01/02/03, 531 06 to 531 13, 531 16 to 531 23/26/27/31/32/33
 531 40/41/43/45, 531 50/51/53/54/55/58/61/62/63/65,
 531 71 to 531 73, 531 80 to 531 87

9. ACCESSORIES

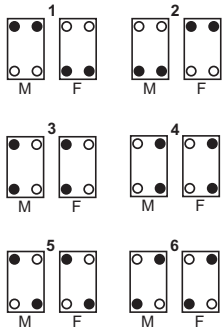
Foolproofing pins

Supplied in bags of 16

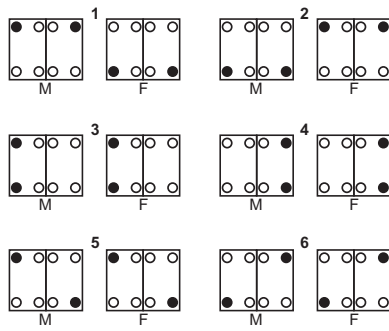
- 10 526 80 Enables the differentiation of juxtaposed bases thanks to several possible combinations.



6, 10, 16, 24 poles




32 poles



- Coding pins
- Fixing screws

- M Male connector part
- F Female connector part



Insert alone can be obtained on request

Consult your Legrand agency