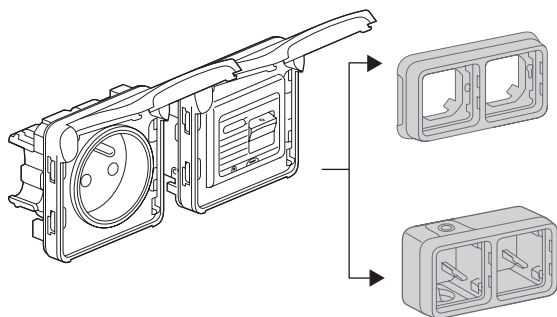


Plexo configurable RCBO socket

Cat. Nos.: 695 66/67 - 696 45



CONTENTS

Page

1. Technical characteristics	1
2. Range	1
3. Installation	1
4. Dimensions	4
5. General characteristics	4
6. Maintenance	5
7. Specific uses	5
8. Equipment and accessories	6

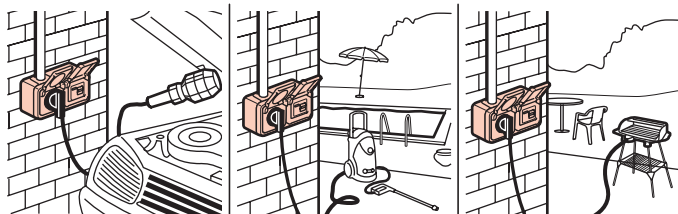
1. TECHNICAL CHARACTERISTICS

Weatherproof wiring device system designed for residential and professional technical locations (garages, cellars, car parks, workshops and industrial kitchens, etc) as well as for outdoor applications (patios, gardens, camp sites, etc).

Socket outlets 16 A 250 VAC to French and Belgian standard, with child protection shutter, for commonly used 2P and 2P+E plugs. Single-pole + Neutral RCBOs 230 V (16 A - 10 mA, 16 A - 30 mA), locally protect a part of a circuit against overload and short-circuits.

The RCBO provides additional protection against direct human contact with live components or ground faults.

Fitted with a Test button.

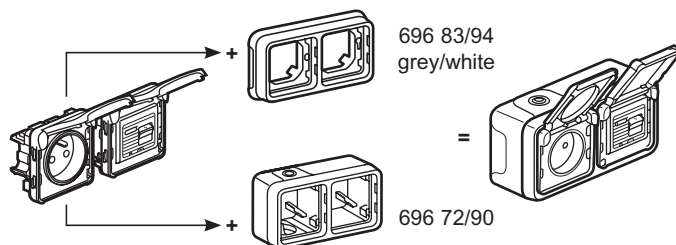


2. RANGE

Cat. No.	2 versions : grey and white
695 XX 696 XX	Configurable
697 XX	Complete surface-mounting
698 XX	Complete flush-mounting
699 XX	DIY market

Description	Cat. No.	Characteristics	Colour	Weight (g)
	695 66	1 socket 16 A 250 V~ 1 RCBO 10 mA 230 V~	Grey	167
	695 67	1 socket 16 A 250 V~ 1 RCBO 30 mA 230 V~	Grey	167
	696 45	1 socket 16 A 250 V~ 1 RCBO 30 mA 230 V~	Grey	167

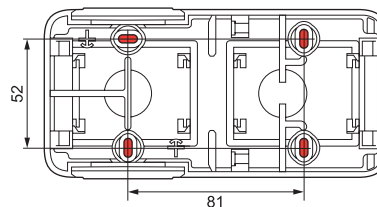
2. RANGE (continued)



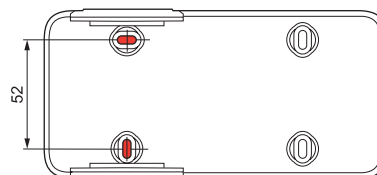
3. INSTALLATION

3.1 Surface mounting

- by screwing back box onto support using four Ø 3 mm - Ø 4 mm max. screws.

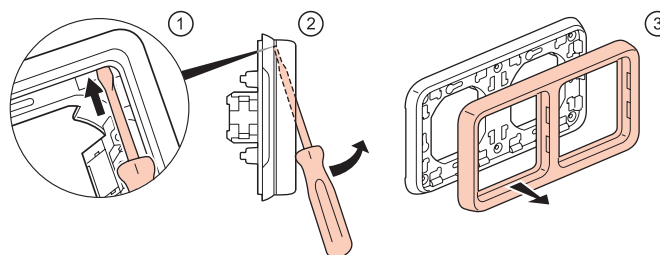


- replacing former Plexo 55 series.



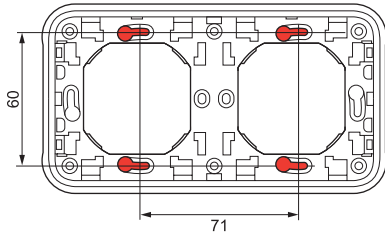
3.2 Flush mounting

- unclip plate.

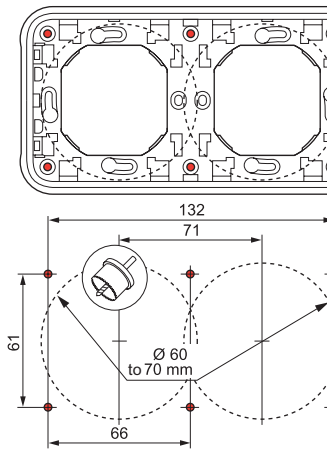


3. INSTALLATION (continued)

- With screws on flush-mounting box, use of Batibox™ flush-mounting boxes (centre distance 71 mm for multi-gang supports).



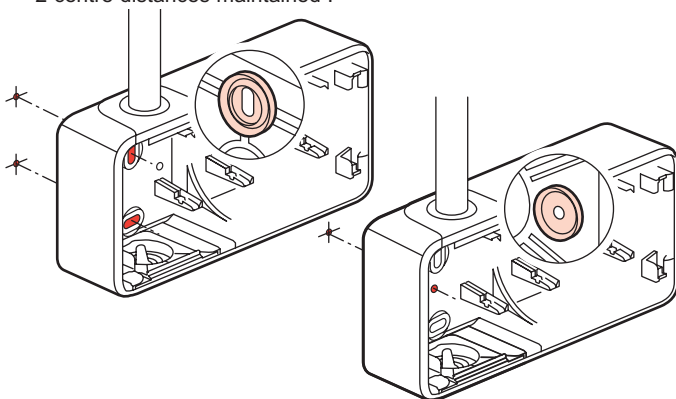
- On solid faceplate using 4 Ø 4 mm screws. Drill support material (diameter 60-70 mm) using hole saw or hole punch



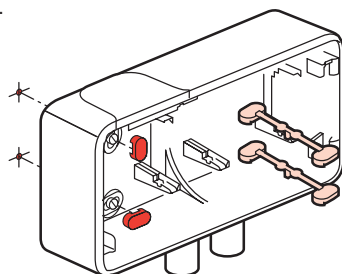
Ø 60-70 mm

3.3 Mounting and sealing

- 4 visible mounting points, centre distance maintained (Plexo 55).
- Fixings are sealed by a gasket overmoulded onto the back of the boxes (except entry gland boxes).
- 2 centre distances maintained :



- For entry gland boxes, the blanks supplied must be fitted as the boxes have no gasket on the back.



3. INSTALLATION (continued)

3.4 Conduit connection

Type of conduit :

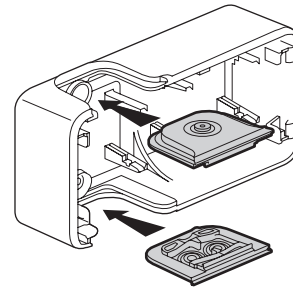
- IRL : formerly IRO, insulating rigid smooth tube
- ICA : insulating flexible bendable corrugated tube
- ICTA : insulating flexible transversally bendable elastic corrugated conduit
- ICTL : insulating flexible transversally bendable elastic smooth conduit

Ø 16
à 25 mm

Cables (examples) :

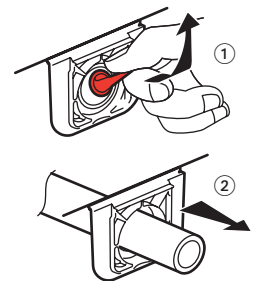
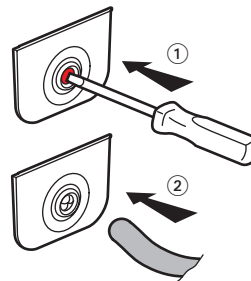
- rigid conductors: U - 1000R2V 3G 2.5
- flexible conductors: H07 RN - F 3G 2.5

- Type of entry gland : flexible with membrane, 2 removable types.
- entry gland with 1 entry supplied with 2 gang boxes (top)
- entry gland with 2 entries supplied with 2 gang boxes (bottom)



Ø 4 - Ø 15 mm

Ø 16/20/25 mm

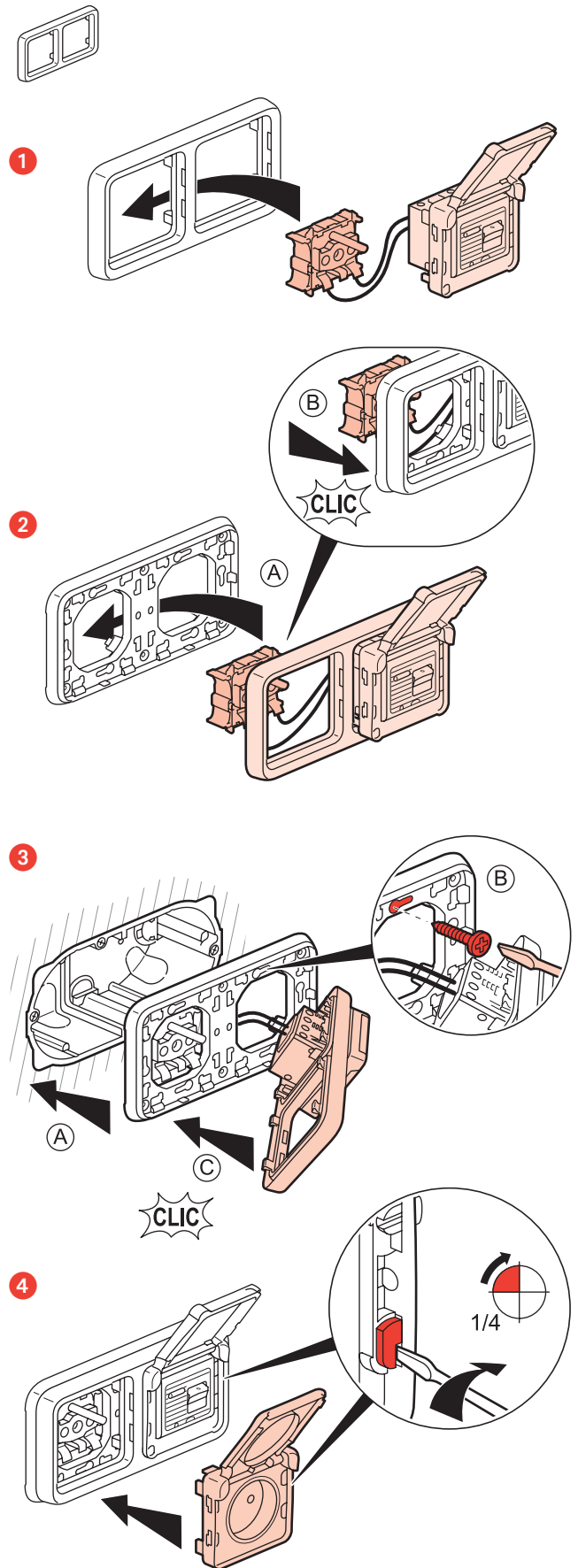
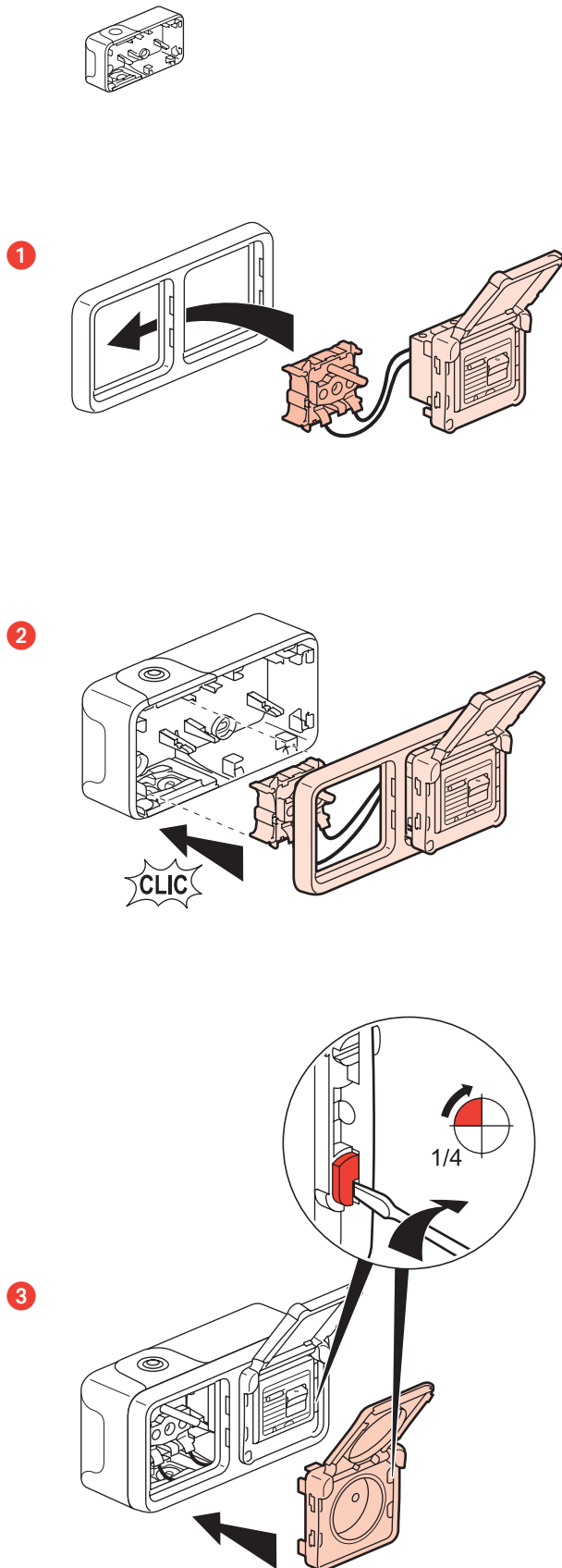


Also available as accessories :

- 695 96 grey entry gland 1 entry
- 695 99 grey entry gland 2 entries
- 696 46 white entry gland 1 entry
- 696 49 white entry gland 2 entries

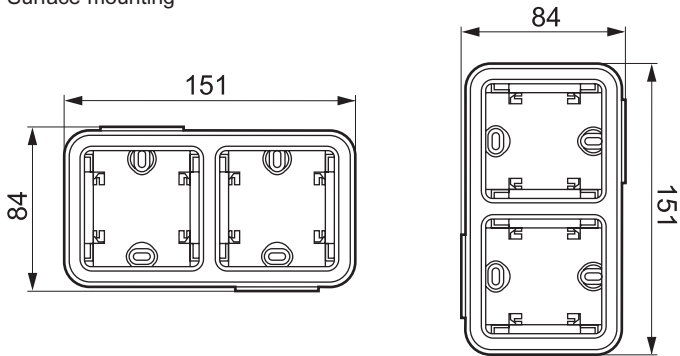
3. INSTALLATION (continued)

3.5 Assembly

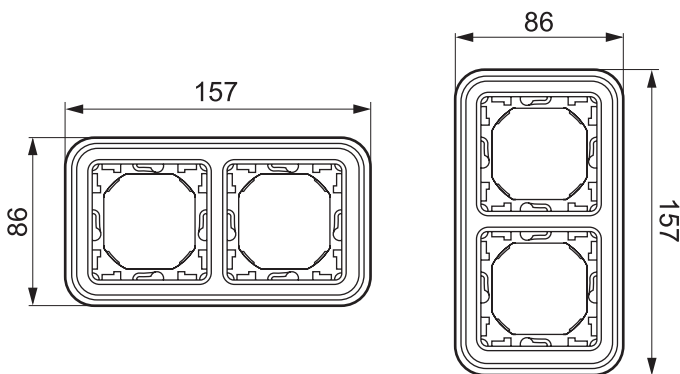


4. DIMENSIONS

Surface mounting



Flush mounting



5. GENERAL CHARACTERISTICS

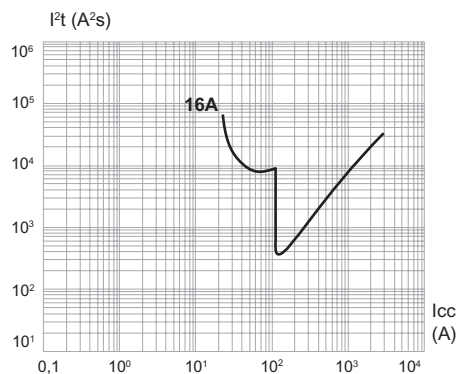
5.1 Electrical characteristics

RCBO



	V	I_n (A)	$I_{\Delta n}$ (mA)	$I_{\Delta m}$ (A)	$^{\circ}\text{C}$
695 66	230 V \sim 50/60 Hz	16	10	500	-20° / +40°
695 67			30		
696 45					

I_n (A) \ I_{cc} (I ² t)	1 500 A	3 000 A
16	28 000	30 000



5. GENERAL CHARACTERISTICS (continued)

Socket outlet



Important :

This product is for use with the main protection device and is not suitable for protecting appliances fitted with grounded capacitors. This product does not operate with ferromagnetic transformers.

V	I_n (A)	P max (W)	$^{\circ}\text{C}$
230 V \sim 50/60 Hz	16	3600	-20° / +40°

5.2 Mechanical characteristics

Protection rating :

- IP 55 IK 07

5.3 Material characteristics

Materials

Box, support: PP (filled Polypropylene)

Plate: ABS (Acrylonitrile-Butadiene-Styrene)

Entry gland: PP + SEBS (Styrene-Ethylene-Butadiene-Styrene)

5.4 Resistance to chemicals

Behaviour

Acetone	-
Acetic acid (10%)	+
Acetic acid (30%)	+
Aminosulphonic acid	-
Boric acid *	+
Hydrobromic acid (47%)	-
Hydrochloric acid *	-
Chromic acid	+
Citric acid *	+
Hydrofluoric acid *	-
Formic acid	-
Lactic acid *	+
Linoleic acid	-
Maleic acid	+
Nitric acid (30%)	-
Nitric acid (50%)	-
Perchloric acid (10%)	+
Benzenesulphonic acid	-
Phosphoric acid *	-
Sulphuric acid	+
Tannic acid *	-
Tartaric acid *	+
Ethanol	+
Isopropyl alcohol	+
Methyl alcohol (methanol)	-
Phenylethylalcohol (100%)	-
Ammonia	+
Baths for electroplating :	
- Bright silver bath	+
- Bright cadmium bath	+
- Chromium plating bath (50°C)	+
- Copper bath (with potassium cyanide)	+
- Copper bath (acid)	+
- Pickling bath with chemical copper plating	+
- Brass bath	+
- Bright nickel bath	+
Barium	
- Barium chloride *	+
- Barium hydroxide *	+
- Barium nitrate *	-

5. GENERAL CHARACTERISTICS (continued)

Benzene	-
Beer	+
Calcium hypochlorite *	+
Cobalt chloride *	-
Cupric chloride *	-
Ferrous chloride *	-
Manganese chloride	-
Mercuric chloride *	-
Methylene chloride	-
Chlorine water (wet gaseous chlorine)	-
Sea water	+
Fertiliser	+
Epichlorohydrin	-
Heavy gasoline	-
White spirit	-
Turpentine	-
Essential oils	+
Linseed oil	+
Lubricating oil	+
Machine oil	+
Mineral oil	+
Paraffin oil	+
Fish oil	+
Castor oil	+
Silicon oil	+
Humus	+
Aqueous hydrogen sulphide	+
Hypochlorite of soda (10%)	+
Fruit juice	+
Milk	+
Chlorinated lye	+
Margarine	+
Fuel oil	+
Mercury	+
Methyl methacrylate	-
Silver nitrate *	+
Cobalt nitrate *	+
Manganese nitrate *	+
Mercuric nitrate *	+
Nickel nitrate *	+
Lead nitrate *	+
Petroleum, petroleum ether	-
Silicate (Potassium, Sodium)	+
Syrup (beetroot)	+
Sodium	
- Sodium acetate*	+
- Sodium bromate*	+
- Sodium chloride* (salt)	+
Caustic soda (40%)	+
Monomer styrene	-
Sugar	+
Trichloroethylene	-
Urine	+
Wine	+

* all concentrations in aqueous solution

Key : + resistant - unstable

This information is given as a guide only and can not be construed as an undertaking on the part of the manufacturer.

Please contact us for specific uses.

5.5 Resistance to ultraviolet radiation

No notable alteration following the 7 day test with 550 W/m² power lighting (Colorimetric measurement using Lab method)

5.6 Resistance to salt spray : 7 days (168 hrs)

6. MAINTENANCE

Clean surface with dry cloth or cloth soaked in soapy water. Do not use acetone, tar remover or trichloroethylene

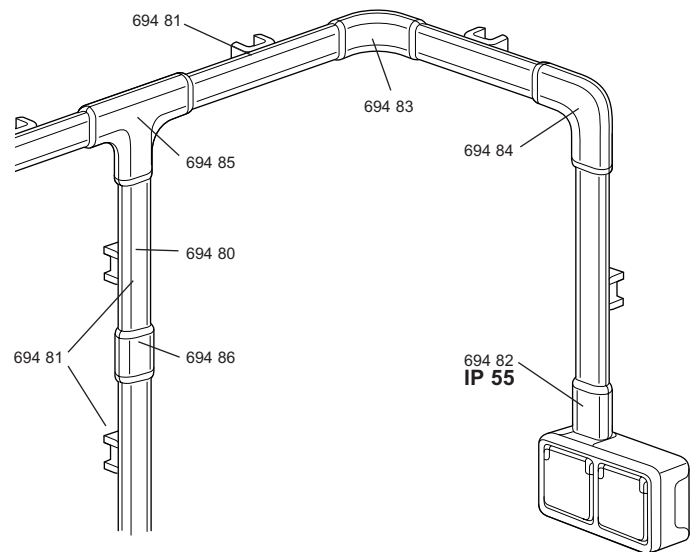
Warning: a prior test is required before using specific cleaning products.

7. SPECIFIC USES

7.1 Installations with profile

The Plexo profile distribution system provides :

- distribution, protection and branch connection of various wires and cables in an electrical installation.
- a profile, finishing and routing accessories (profile joint, weatherproof universal junction, flat angle, internal angle, external angle, branch connection, bracket)
- a new solution for installing weatherproof surface mounting wiring device installations in domestic and occasionally tertiary technical situations.
- optimum safety and reliability due to compliance with standard NFC 68-104 (IP 42, IK 07)

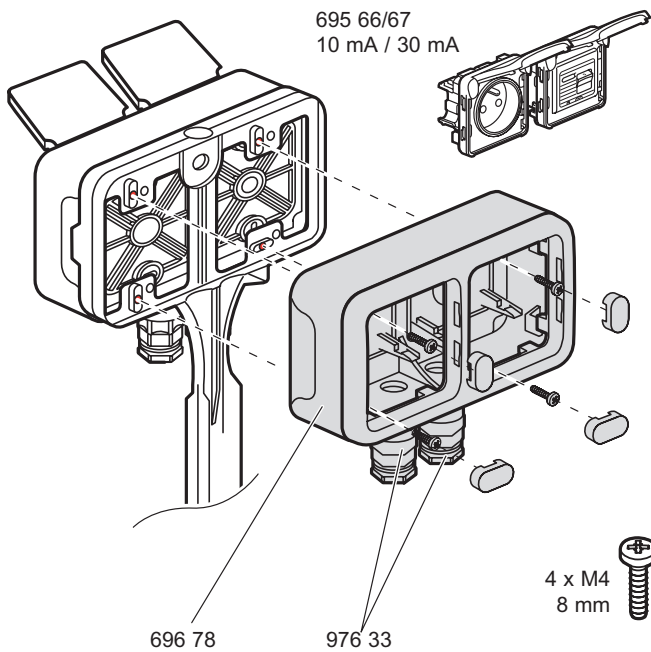
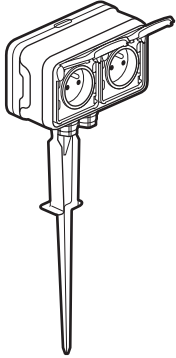


Cat. Nos.	Description
694 80	Plexo profile, 2.00 m long, capacity equivalent to an IRL Ø 25 mm
694 81	Plexo profile bracket
694 82	IP55 weatherproof universal connection
694 83	Plexo profile internal/external angle
694 84	Plexo profile flat angle
694 85	Plexo profile tee
694 86	Plexo universal junction



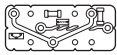
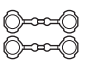


- Refer to the specific technical sheet for Plexo profile, technical data sheet: F00386FR/00

7. SPECIFIC USES (continued)

7.2 Installation with garden spike 697 49



8. EQUIPMENT AND ACCESSORIES

Désignation	Utilisations	Réf.	Couleur
Entry gland 1 entry 	Used to provide an aesthetic connection between boxes and cables up to Ø 16 mm inclusive	695 96 696 46	Grey White
Entry gland 2 entries 			
Drilling template 	Used for fast identification of mounting centre distances of all boxes	695 97	-
Set of 4 covers 	Used to blank mounting holes at bottom of boxes	695 98	Grey
Multi-cable gland (for gland box) 	(PG 16) Ø 7-14 mm	695 53	
Branch connection terminal block 	Direct connection after stripping rigid conductors Terminal capacity: 0.75 - 2.5 mm ²	343 22	