

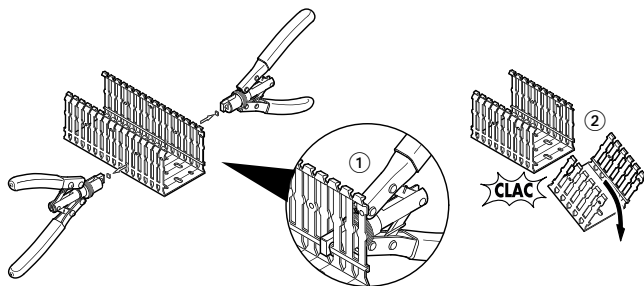
CONTENT	Page
1. General characteristics	1
2. Range	2
3. Technical characteristics.....	2
4. Dimensions.....	4
5. Accessories	4

1. GENERAL CHARACTERISTICS

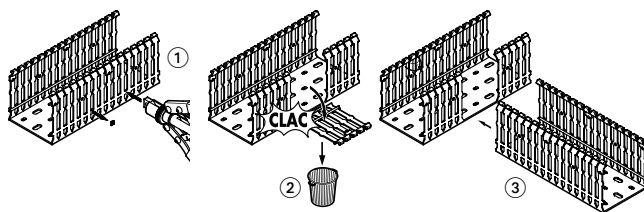
Lina 25 cable ducting is used to organise running the wiring vertically and horizontally inside a control system or distribution electrical enclosure.

The range covers requirements from 25x25 to 120x80 mm.

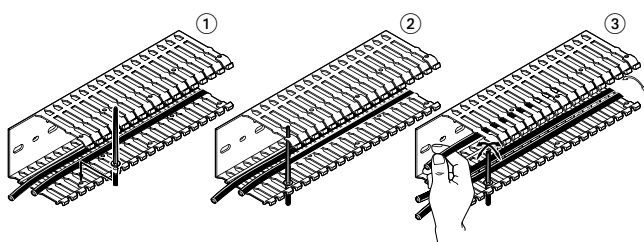
Lina 25 ducting can be cut to length without using a saw. After making 2 lateral cuts with the Lina 25 tool, the ducting can be separated manually by a simple snap, thanks to the cut-outs on the bottom (quick, no dust, no burrs).



They can be used to create a T junction between vertical and horizontal ducting all the way along, without obstacles. After cutting with the Lina 25 tool, the side detaches easily thanks to the prescribed breaking line at the base of the ducting.

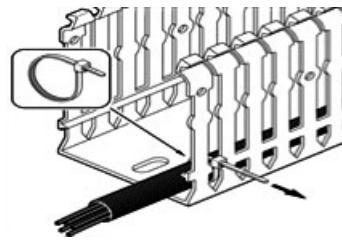


Wire-retaining clips can be passed through holes positioned at regular intervals along the tab ends to prevent the wires escaping from the ducting during installation. The clips can be left in place even after the cover is fitted.



1. GENERAL CHARACTERISTICS (continued)

The ducting allows a cable tie to pass through the lateral perforations at the base of the ducting to clamp a sleeve or a cable.



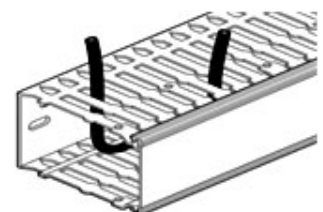
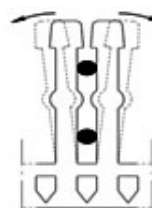
The ends on Lina 25 ducting tabs are designed to prevent injury. The space between two tabs is 6 mm, which allows a 1.5 mm² cross-section cable maximum to pass through without breaking the tab.



The height between the base of the ducting and the stiffener must not exceed 20% of the total height. Wires can be introduced very close to the baseplate by removing the link between the two tabs using the Lina 25 cutter tool.

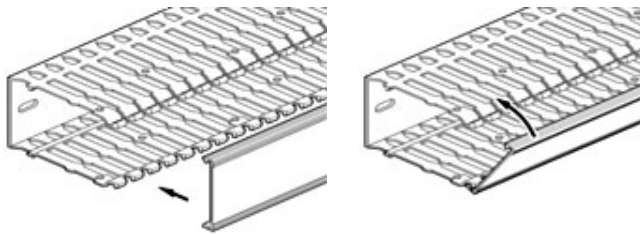


The bosses can be used to hold the wires at the bottom of the ducting to prevent them escaping during wiring. They also mean that two wiring levels can be used.

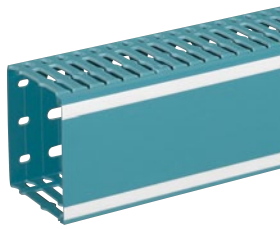


1. GENERAL CHARACTERISTICS (continued)

The cover is easily fitted on the ducting either by clipping on the front or by rotating it. It can be opened without special tools.



Two white strip on the cover enable the marking.



2. RANGE

Blue 2525 Afnor
Lenght 2 m

Cat. No.	Width (mm)	Height (mm)	Cross-section	Pack of (m)	Weight (kg/m)
0 362 00	25	25	25x25	60	0.289
0 362 01	25	40	25x40	56	0.335
0 362 02	25	60	25x60	56	0.396
0 362 03	25	80	25x80	40	0.456
0 362 05	40	25	40x25	56	0.383
0 362 06	40	40	40x40	48	0.446
0 362 07	40	60	40x60	48	0.482
0 362 08	40	80	40x80	40	0.572
0 362 11	60	40	60x40	32	0.604
0 362 12	60	60	60x60	32	0.617
0 362 13	60	80	60x80	32	0.715
0 362 16	80	60	80x60	24	0.771
0 362 17	80	80	80x80	24	0.855
0 362 25	120	80	120x80	16	1.210

Covers only:

Cat. No.	Width (mm)	Pack of (m)
0 370 41	25	36
0 370 42	40	36
0 370 43	60	36
0 370 44	80	36
0 370 46	120	36

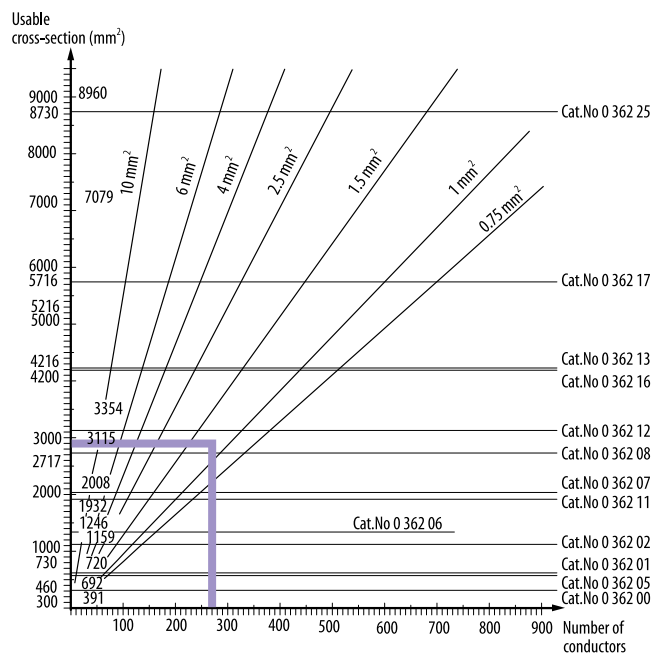
3. TECHNICAL CHARACTERISTICS

3.1 Cabling capacity

Cross-section	Capacity (mm ²)	Cross-section	Capacity (mm ²)
25x25	391	40x80	2717
25x40	720	60x40	1932
25x60	1159	60x60	3115
25x80	1570	60x80	4216
40x25	692	80x60	4200
40x40	1246	80x80	5716
40x60	2008	120x80	8730

Wire dimensions chart:

Graph for H 05 V-K and H 07 V-K cables with 0.75 packing coefficient



Example: 150 conductors 0,75 mm² → 1230 mm² cross-section and
120 conductors 1,5 mm² → 1 700 mm² cross-section
 Makes a total of 2930 mm²
 The correct cable ducting is Cat.No. 0 362 12 -
 60 x 60 with a capacity of 3115 mm²

3.2 Standards

- Conforming to standard EN 50 085 part 2-3
- Conforming to ROHS: lead and cadmium-free
- Blue 2525 according to AFNOR NF X08-002
- Approvals: UL, CSA (except cat. no. 0 362 03) and NF

3.3 Product classification according to EN 50085-2-3

- Non-metal product
- Method of opening cover: no tools required
- Minimum storage and transport temperature: - 25°C
- Maximum operating temperature: + 60°C
- Flame-retardant
- No electrical continuity
- Electrically insulating
- Installation position: on vertical or horizontal surface, cover facing down not permitted

3. TECHNICAL CHARACTERISTICS (continued)

■ **3.4 Material**

The Lina 25 cable ducting material is PVC.
Performance of material:

Characteristics	Performance	Unit of measurement	Standards
Physical			
Specific gravity	1.67	g/cm ³	ISO 1183
Water absorption	0.05	%	ISO 62
Mechanical			
Ultimate tensile strength	31	MPa	ISO 527
Tensile load	33	MPa	ISO 527
Breaking elongation	100	%	ISO 527
Elastic bending modulus	4.000	MPa	ISO 178
Thermal			
VICAT temperature	84	°C	ISO 306
Operating temperature	-5 à +60 ⁽¹⁾	°C	EN 50085-2-3
HDT temperature	73	°C	ISO 75
Expansion	< 6 x 10 ⁻⁵	°K ⁻¹	DIN 53762
Electrical			
Dielectric constant	> 2.5	-	ASTM D150
Dielectric strength	Approx 30	KV/mm	IEC 243
Surface resistivity	> 1 x 10 ¹⁵	Ohm	IEC 93
Fire behaviour			
UL94 classification	VO	-	UL 94
M classification	M1	-	NF P 92-501
Glow-wire	960	°C	IEC 695-2-1
Oxygen index	> 42	%	ISO 4589

⁽¹⁾ X31 classification

3. TECHNICAL CHARACTERISTICS (continued)

■ **3.4 Material (continued)**

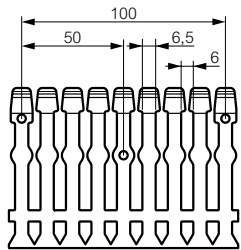
Cable ducting calorific value:

Cat. No.	Material	Product	Total part (MJ/kg)
0 362 00	PVC	25x25	11.600
		cv 25	
0 362 01	PVC	25x40	13.280
		cv 25	
0 362 02	PVC	25x60	16.120
		cv 25	
0 362 03	PVC	25x80	17.280
		cv 25	
0 362 05	PVC	40x25	15.440
		cv 40	
0 362 06	PVC	40x40	17.760
		cv 40	
0 362 07	PVC	40x60	19.680
		cv 40	
0 362 08	PVC	40x80	21.880
		cv 40	
0 362 11	PVC	60x40	23.880
		cv 60	
0 362 12	PVC	60x60	24.520
		cv 60	
0 362 13	PVC	60x80	28.960
		cv 60	
0 362 16	PVC	80x60	30.968
		cv 80	
0 362 17	PVC	80x80	32.808
		cv 80	
0 362 25	PVC	120x80	46.784
		cv 120	

4. DIMENSIONS

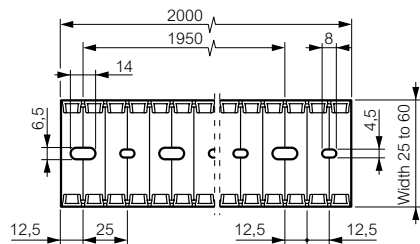
Dimensions are in mm.

4.1 Lateral perforations

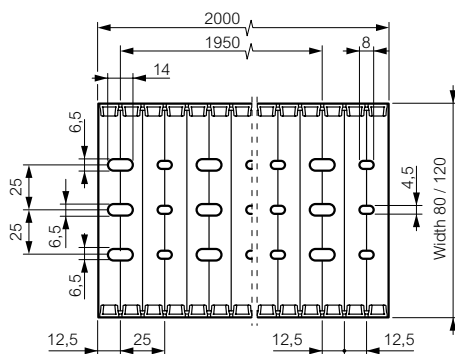


4.2 Perforations on the base

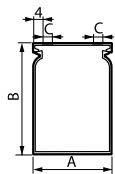
Width 25 to 60



Width 80 and 120



4.3 Width of marking strips (C)



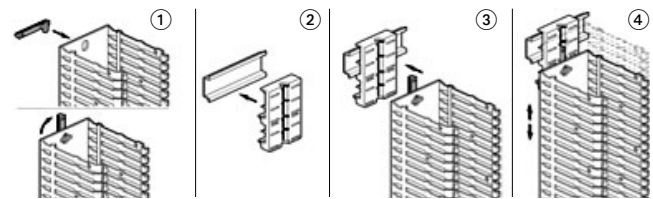
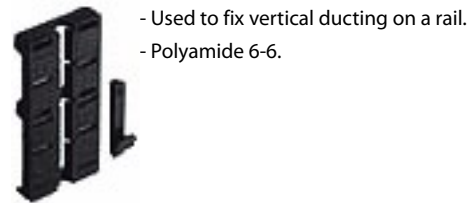
Cat. No.	A	B	C
0 362 00	25	25	6
0 362 01	25	40	5
0 362 02	25	60	6
0 362 03	25	80	6
0 362 05	40	25	10
0 362 06	40	40	10
0 362 07	40	60	10
0 362 08	40	80	10
0 362 11	60	40	10
0 362 12	60	60	10
0 362 13	60	80	10
0 362 16	80	60	10
0 362 17	80	80	10
0 362 25	120	80	10

5. ACCESSORIES

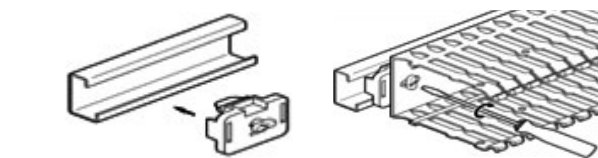
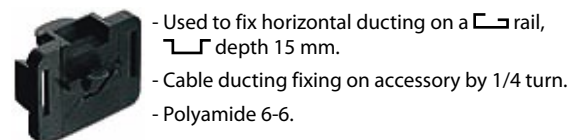
5.1 Fixing accessories

5.1.1 Linafix screwless fixing

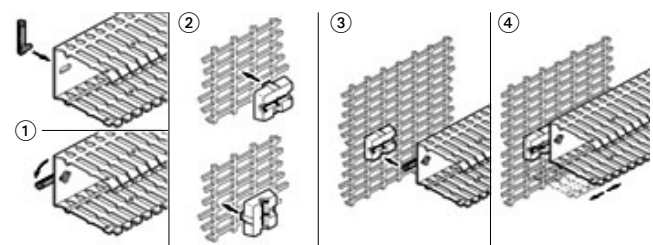
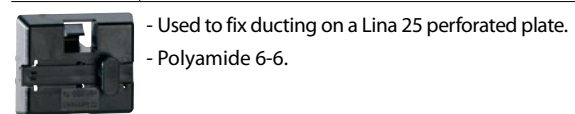
Cat. No.	Description
0 367 00	Rail-fixing accessory for vertical ducting



Cat. No.	Description
0 366 40	Rail-fixing accessory for horizontal ducting



Cat. No.	Description
0 366 41	Accessory for fixing on Lina 25 perforated plate



5. ACCESSORIES (continued)

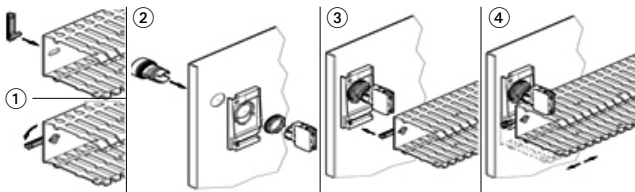
■ **5.1 Fixing accessories (continued)**

5.1.1 Linafix screwless fixing (continued)

Cat. No.	Description
0 366 42	Accessory for fixing to door



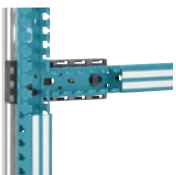
- Used to fix ducting to a door (without glue).
- Fits onto Osmoz control and signalling auxiliaries (Ø 22 mm).
- Polyamide 6-6.



Cat. No.	Description
0 366 43	Accessory for fixing on Lina 25 upright



- Use to fix vertical ducting on Lina 25 upright, and horizontal ducting.
- Double adjustment enables alignment with perforations at the bottom of cable ducting.
- Possible horizontal reinforcement with rail 15 mm depth.
- Polyamide 6-6.



5.1.2 Self drilling/tapping screw

Cat. No.	Description
0 347 45	H 4.8 x 16 mm screw



- Use to fix ducting on a Lina 12.5 plate (Ø 3.3 mm).
- Zinc-plated steel.

5.1.3 Isolating screw cover

Cat. No.	Description
0 347 50	Screw cover for isolating screw head cat. no. 0 347 45



- Use to isolate the head of the screw cat. no. 0 347 45 inside ducting.
- Polyethylene.

5. ACCESSORIES (continued)

■ **5.1 Fixing accessories (continued)**

5.1.4 Plastic rivets

Cat. No.	Description	Ø head (mm)
0 366 46	Standard rivet Ø 6 mm ⁽¹⁾	10
0 366 44	Reinforced rivet Ø 6 mm ⁽²⁾	10

- ⁽¹⁾ Drilling diameter: 5.5 to 6 mm
- ⁽²⁾ Drilling diameter: 6.5 mm

Standard



- Used to fix the ducting on a solid plate without needing to tap holes.

Reinforced



- The reinforced rivet enables to fix cable ducting in 6.5 mm hole of Lina 12.5 plate and perforated Lina 25 plate for Atlantic and Marina cabinets.
- Polyamide 6-6.

■ **5.2 Cutter tool**

Cat. No.	Description
0 367 10	Lina 25 tool for cutting ducting to required length



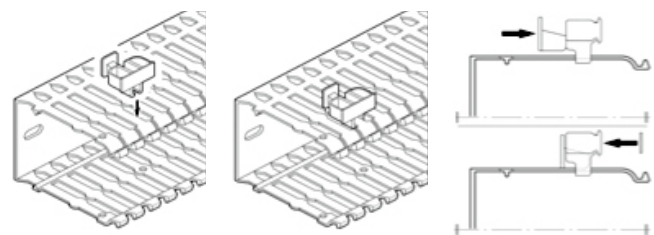
■ **5.3 Linagraf labelling accessories**

5.3.1 Label-holder

Cat. No.	Description
0 367 02	Label-holder



- Used to label the ducting directly.
- Clips onto a tab.
- Can take a self-adhesive label 30 x 10 mm max.
- ABS

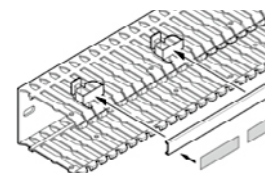


5.3.2 Marking extension strip

Cat. No.	Description
0 370 10	Marking extension strip



- Used to label the ducting directly with a long text.
- Clips onto label-holder cat. no. 0 367 02.
- Length 2 m.
- PVC



5. ACCESSORIES (continued)

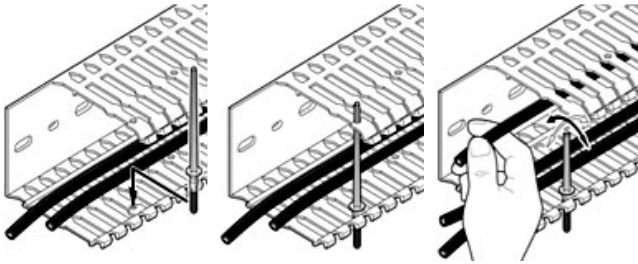
■ **5.4 Wiring accessories**

5.4.1 Wire-retaining clip

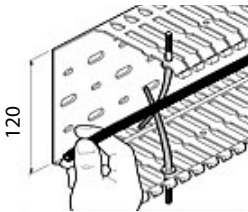
Cat. No.	Description
0 367 01	Wire-retaining clip



- Clips can be used to hold the wires at the bottom of the ducting, and keep them in place during wiring.
- Total length 83 mm.



- For 120 mm wide ducting, two clips placed opposite one another can be used to hold the wires in place.



5.4.2 Braided sleeving

Cat. No.	Description
0 366 38	Braided sleeving for door Ø 20 mm ⁽¹⁾
0 366 39	Braided sleeving for door Ø 30 mm ⁽²⁾

⁽¹⁾ Variation in diameter: 10 to 30 mm

⁽²⁾ Variation in diameter: 18 to 54 mm



- Supplied in 50 m roll in dispenser box
- Black Polyester