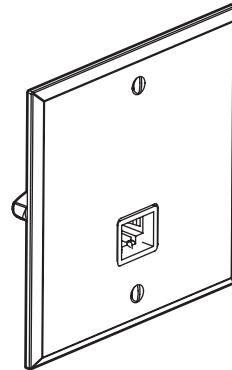


Cristal Mémoire style
RJ 45 socket - Cat. 6

Cat. No(s): AR-67025



1. USE

Category 6 RJ 45 sockets.
 Take high-speed transmissions (Ethernet Gigabit).
 Supplied with finishing plates.

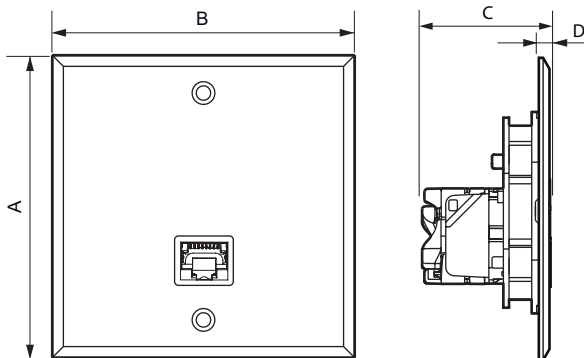
2. RANGE

RJ 45 socket

| | | |
|----------|-----------|-------------------------|
| AR-67025 | ● Cristal | RJ 45 socket Cat. 6 FTP |
|----------|-----------|-------------------------|

Note: Other finishes and configurations are provided, see technical data sheet F02217EN/01.

3. DIMENSIONS (mm)



| A | B | C | D |
|----|----|----|-----|
| 80 | 80 | 35 | 3.5 |

4. ASSEMBLY

- Do not use an electric screwdriver to tighten the screws when assembling wiring accessories.
- Take care not to overtighten the visible screws when assembling Mémoire style wiring accessories:
 - Risk of damaging the screw heads.
 - Risk of the screwdriver slipping and permanently scratching the plate.
 - Risk of the plate warping (bending), resulting in the plate not lying flat against the wall.
- Use a flat screwdriver (4 mm wide, 0,8 mm thick) for the screws supplied on the wiring accessory.
- ART d'Arrould electrical wiring accessories are supplied with long fixing screws which can be cut at several points to adapt the screw length to the box flush-mounting depth in the wall.

If ART d'Arrould wiring accessories are being mounted in thick surfaces such as tiles, marble, wainscot panelling with flush-mounting boxes chased deep into the wall, the whole screw length can be used to fix the wiring accessory.

If ART d'Arrould wiring accessories are being installed in walls with non-projecting flush-mounting boxes (masonry walls, dry partitions), the screws which can be cut at several points to shorten the thread.

To protect the products, it is essential to install them once all surface coatings are completely dry, in a dry and non-agressive environment, indoors only.

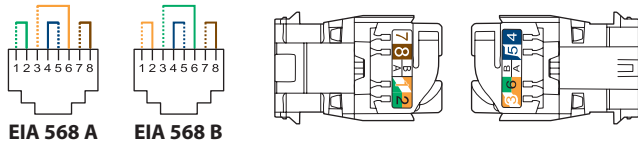
It is recommended that you install the plates only after the wall coatings have been completely finished (paint, fabrics, etc.).

5. STANDARD RJ 45 CONNECTION

Takes the following plugs: RJ 11 (4 contacts), RJ 12 (6 contacts), RJ 45 (8 contacts UTP and 9 contacts FTP).

EIA/TIA 568 A and B dual colour code on terminals:

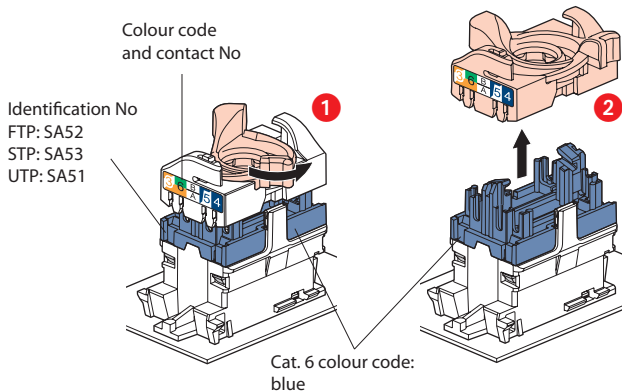
- FTP 9 contacts
- STP 9 contacts with 360° shielding



Permissible conductors:

- Single-core: AWG 22 to 26
- Multicore: AWG 26
- Polyethylene conductor insulation: maximum Ø on insulation 1.58 mm

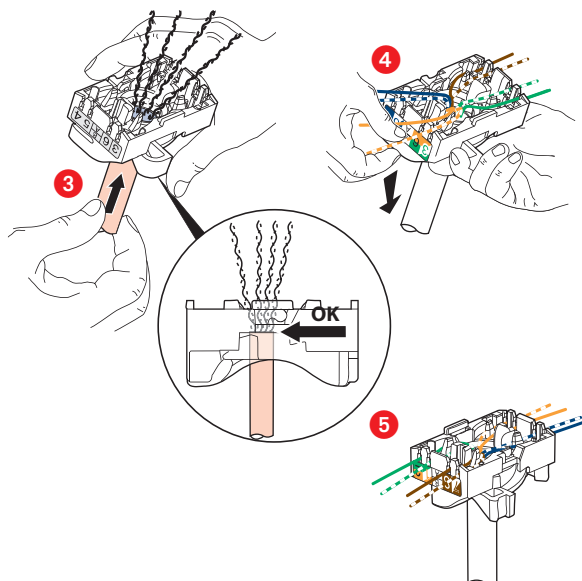
RJ 45 connectors are equipped with a locking nut. They do not require a special tool and can be re-wired if a mistake is made.



This system makes it easy to spread pairs before fitting them onto the connector.

Spreading the cables ensures that a pair-breakage distance of 13 mm is kept between each pair.

Spreading pairs at 90° to the cable ensures the best possible performance.



6. TECHNICAL CHARACTERISTICS

■ 6.1 Mechanical characteristics

Impact test: IK 02
 Ingress of solids/liquids: IP 20

■ 6.2 Material characteristics

- Plate: Cristal transparent PC
- Subplate: Inox
- Chrome screws
- Motor:

Contacts : or/nickel, épaisseur d'or > 0,8 em minimum
 Pièces métalliques : bronze, nickel, platine, or
 Capot : Polycarbonate PBT

Autoextinguibilité : 650°C/30 s

■ 6.3 Electrical characteristics

Breakdown voltage ≥ 1000 V
 Contact resistance ≤ 20 m Ω
 Insulation resistance ≥ 500 m Ω under 100 V DC
 Connector tested and guaranteed under POE signal stress, standard IEEE 802.3af and POE+, draft standard 802.3at, up to 2500 load connections/disconnections.
 Tests are carried out with 2 simultaneous POE+ circuits for a minimum total power of 50 W.

■ 6.4 Climate characteristics

Storage temperature: - 10°C to + 70°C
 Operating temperature: - 5°C to + 35°C

7. CARE

Clean and dust using a soft, damp cloth (dampened with water) or wipes impregnated with a product containing less than 5% alcohol and anionic surfactant.

Caution: Always test before using other special cleaning products.

Banned products

- Solvents, various essential oils, paint, or adhesive tape,
- Scouring powders (because are abrasive),
- Products containing bleach,
- Special products for stainless steel,
- Renovators (because they often contain abrasives and chemical agents),
- Splashes or fumes from floor, paint, or wood stripping products, etc.

Caution:

Any mechanical attack or foreign object (screwdriver, etc.) striking the surface of the plate would damage the finish and therefore also the surface treatment.

8. STANDARDS AND APPROVALS

Compliant with installation and manufacturing standards.
 See e.catalogue.