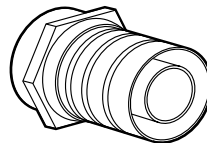


739 90 screw-type



739 95 crimp-type

1. GENERAL CHARACTERISTICS

Male television plugs for connection to any TV component fitted with a female "F" plug

The cable core itself acts as the male pin

2. TECHNICAL CHARACTERISTICS

Operating frequency: 5-2150 Mhz

Connectivity attenuation ≤ 0.5 db

Passage of satellite control signals possible for switching (power pass)

Characteristic impedance 75Ω

Steel body with nickel coating

Screw-type model Cat. No. 739 90 can be dismantled

Crimp-type model Cat. No. 739 95 one-off assembly

3. CONNECTION

On TV coaxial $\leq \varnothing 7$ mm

Screw-type model Cat. No. 739 90 - fold back the braid over the insulation before screwing in the coaxial

Crimp-type model Cat. No. 739 95

Crimping pliers model Cat. No. 739 97

Weight ≤ 5 g

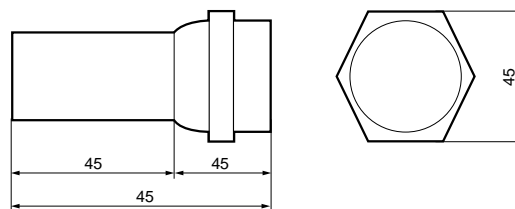
4. INSTALLATION RECOMMENDATIONS

⚠ Leave 2 mm minimum of coaxial core at the end of the connector during assembly

⚠ A crimp-type connection will offer a higher level of reliability

⚠ To increase the service life of connections in highly corrosive areas (seaside, etc), spray the inside of the "F" connector with a film of silicon

5. DIMENSIONS



6. APPROVAL

CE