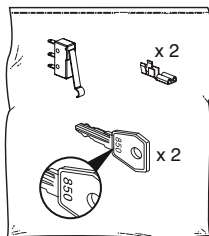
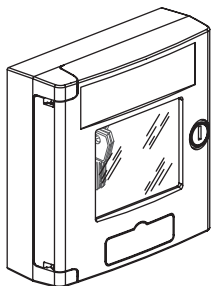



- Coffret réserve de clé rouge/vert/blanc
- Rood/groen/wit kastje voor reserve sleutels
- Break glass key box : red/green-white
- Schlüsselaufbewahrungskasten rot/grün/weiss
- Cofre para llaves, rojo/verde/blanco
- Cassetta per chiave di riserva rossa/verde/blanca
- Quadro de reserva de chaves vermelho/verde/branco

380 54/55/56

 **legrand**[®]



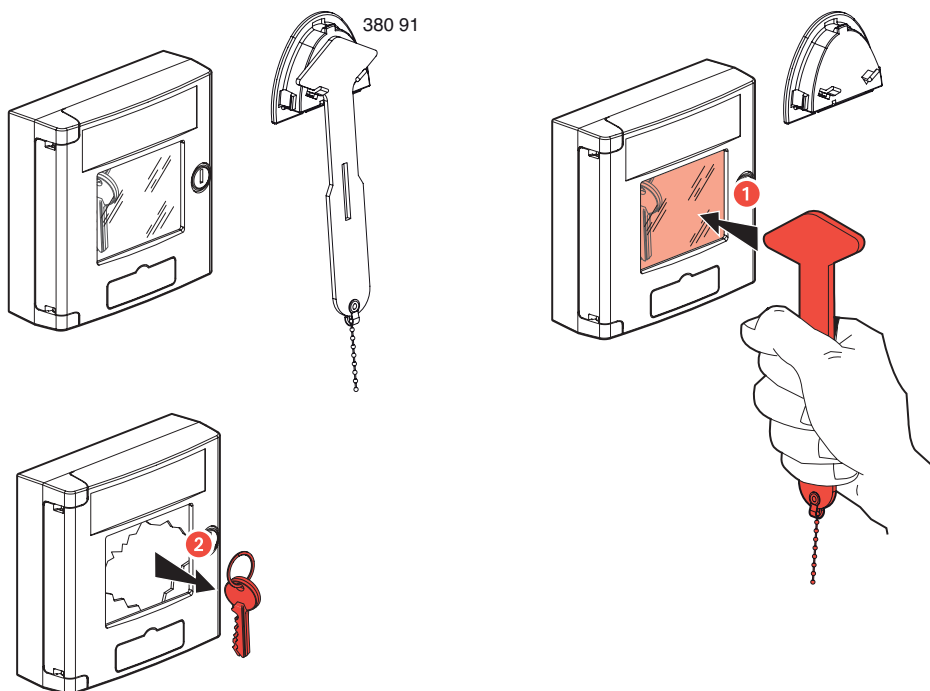
4 à 48 V --- ;
100 mA max
IP 44 IK 07

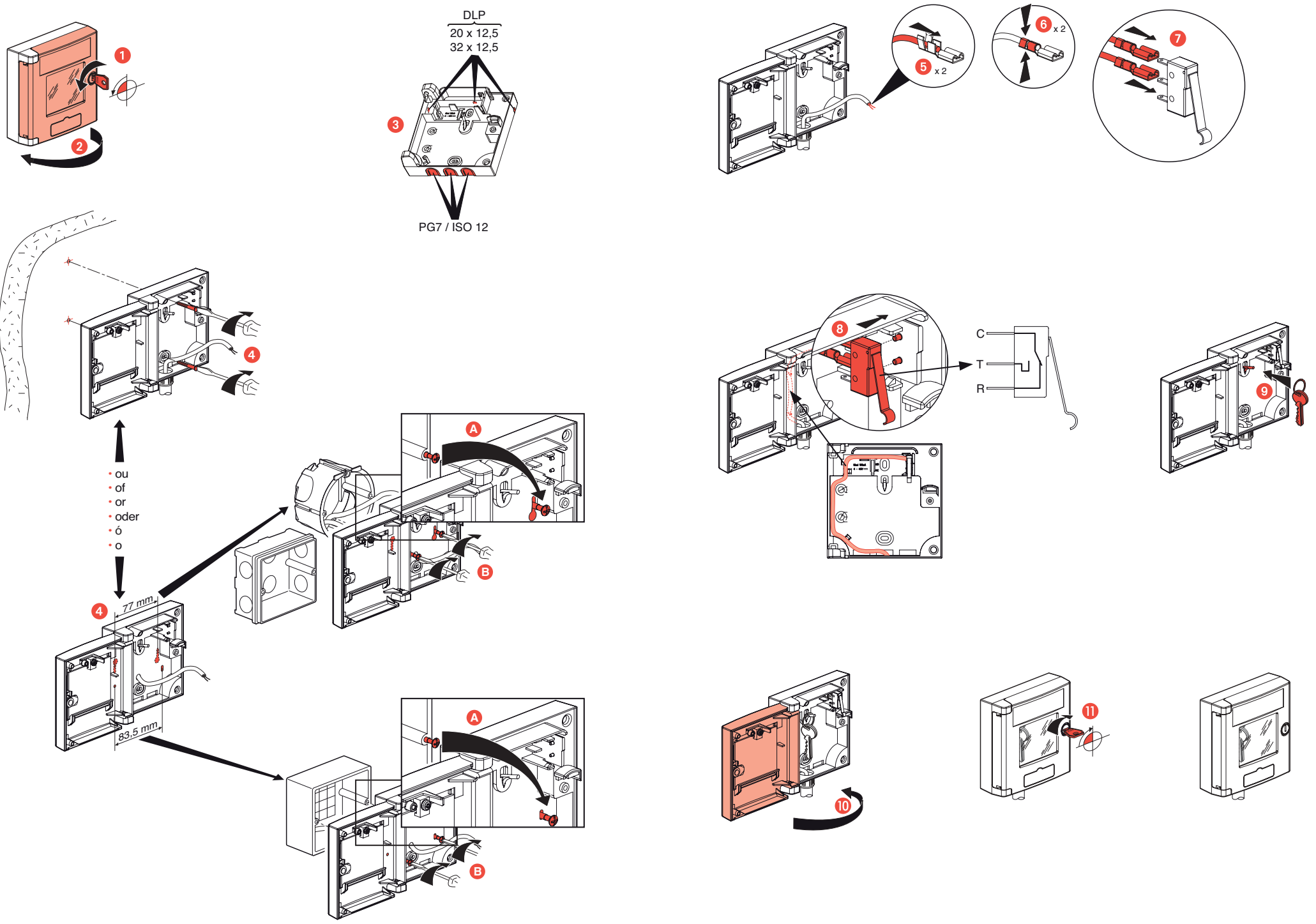
 0,25 à 0,5 mm²

FRANCE

Attention :

L'installation doit être réalisée conformément aux exigences de la norme NF C 15-100.

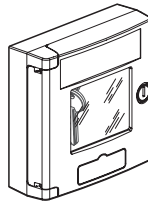
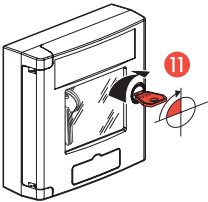
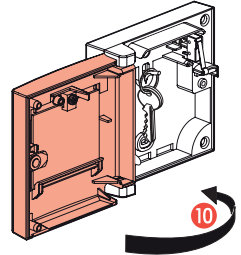
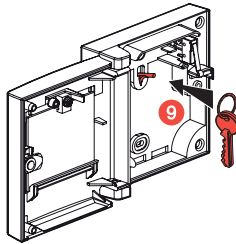
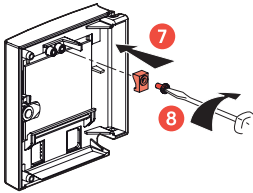
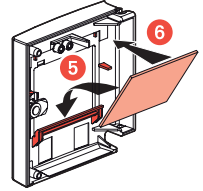
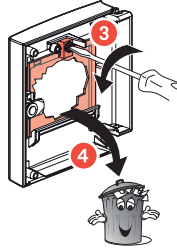
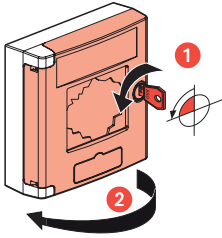




- Remplacement de la vitre
- Vervanging van het glas
- Replacement of glass

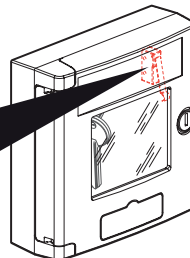
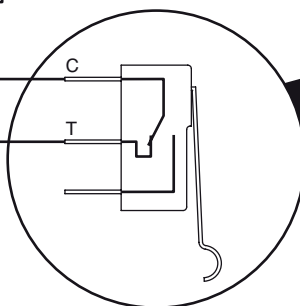
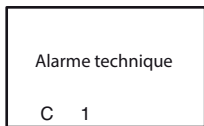
- Austausch der Scheibe
- Sustitución del cristal
- Sostituzione del vetro

- Substituição do vidro



- Raccordement à une alarme technique
- Aansluiting aan een technisch alarm
- Connection to alarm system
- Anschluss an ein Störmeldesystem

- Conexión a una alarma técnica
- Collegamento ad un allarme tecnico
- Ligação a alarme técnico



- Vitre intacte
- Onbeschadigd glas
- Glass intact
- Unbeschädigte Scheibe
- Cristal intacto
- Vetro intatto
- Vidro intacto