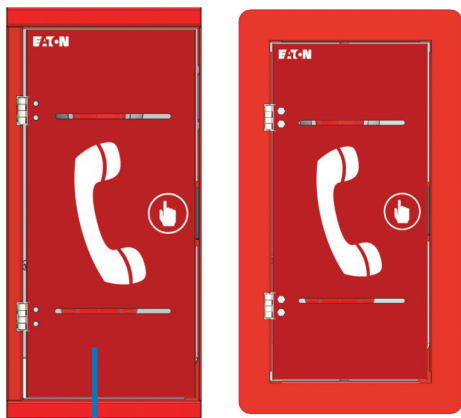
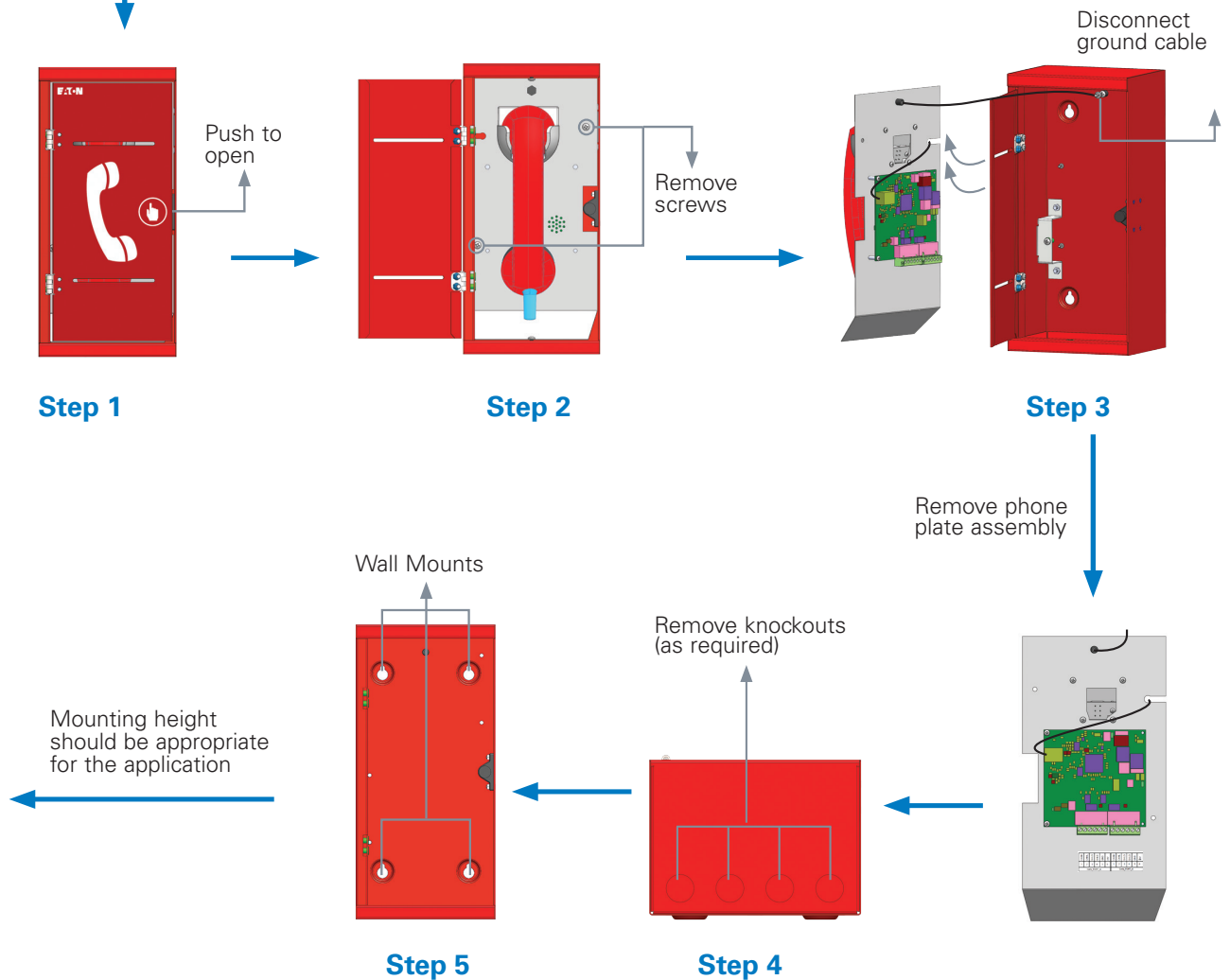


# VoCALL 16 Type A Outstation

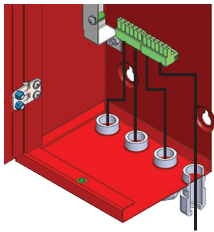


Product number	Description
TA16-RS	Type A outstation (Red, Surface mount)
TA16-SS	Type A outstation (Stainless, Surface mount)
TA16-BEZ	Type A outstation Flush Bezel (Red)
TA16-SS-BEZ	Type A outstation Flush Bezel (Stainless)

<b>Finish &amp; mounting</b>	Red, Stainless steel; Surface, Flush
<b>Cabling</b>	Enhanced FP200 2X2 / 4X1 Core; 1.5 sq mm
<b>Configuration &amp; distance</b>	Loop configuration; Maximum distance between two units - 200 meter
<b>Dimension</b>	H 320 X W 152 X D 114 mm (2.2 Kg)
<b>Knockouts</b>	4 x 20 mm dia

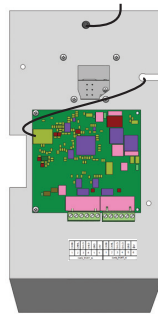


Powering Business Worldwide



Step 6

Insert connectors in PCB



Step 7

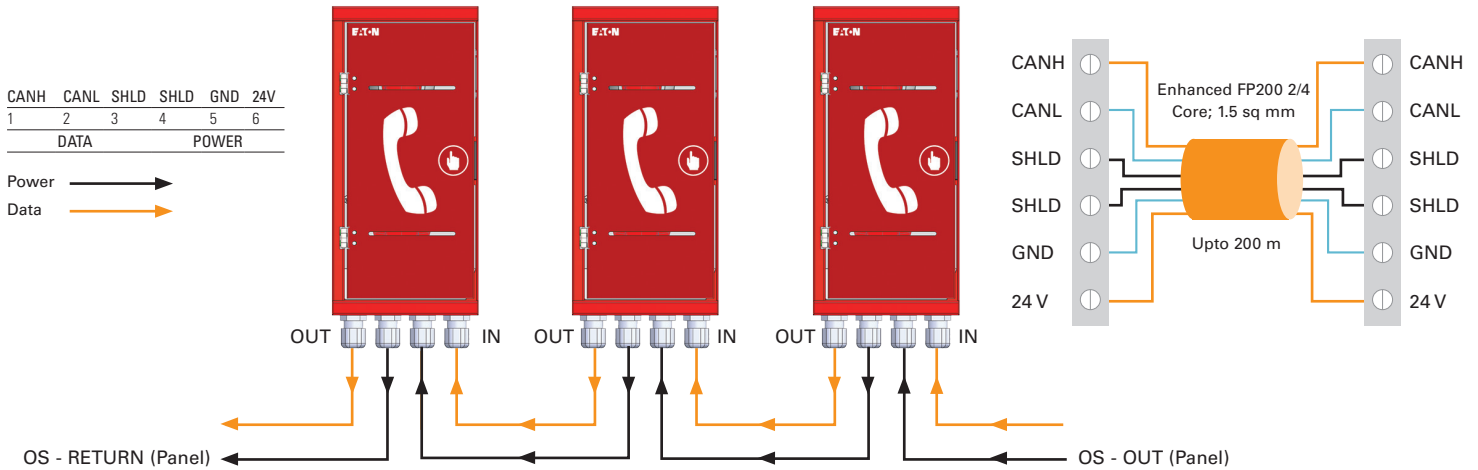
Re-connect ground cable. Assemble the unit.



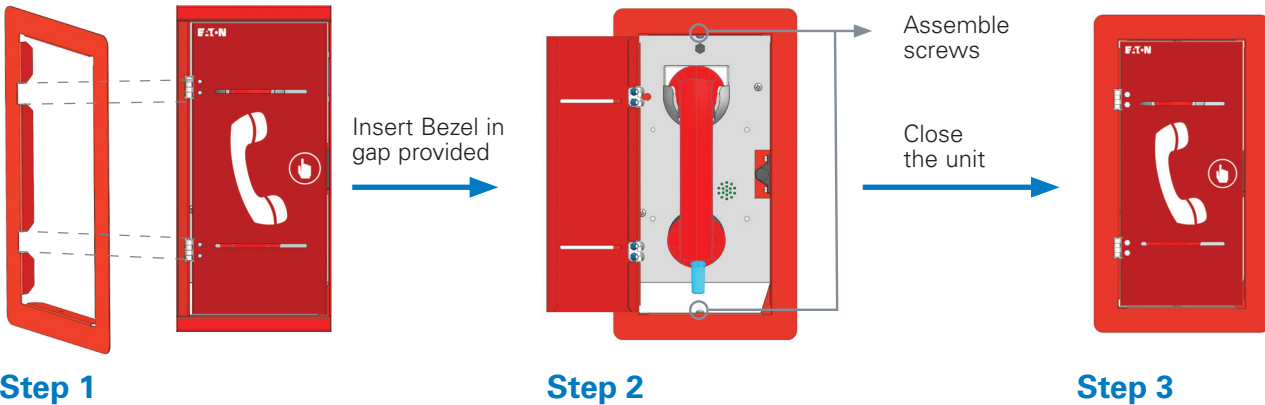
Step 8

Close the unit

## Wiring



## Flush mount process



**Manufactured by**  
**Eaton Electrical Systems Limited.**  
Wheatley Hall Rd Doncaster  
South Yorkshire, DN2 4NB  
Eaton.uk.com  
Tel. +44 (0) 1302 303 350  
www.cooperfire.com  
www.eaton.com  
Made in Romania

**Eaton Industries Manufacturing GmbH**  
EMEA Headquarters  
Route de la Longeraie 7  
1110 Morges, Switzerland  
Eaton.eu

Changes to the products, to the information contained in this document, and to prices are reserved; so are errors and omissions. Only order confirmations and technical documentation by Eaton is binding. Photos and pictures also do not warrant a specific layout or functionality. Their use in whatever form is subject to prior approval by Eaton. The same applies to Trademarks (especially Eaton, Moeller, and Cutler-Hammer). The Terms and Conditions of Eaton apply, as referenced on Eaton Internet pages and Eaton order confirmations.